

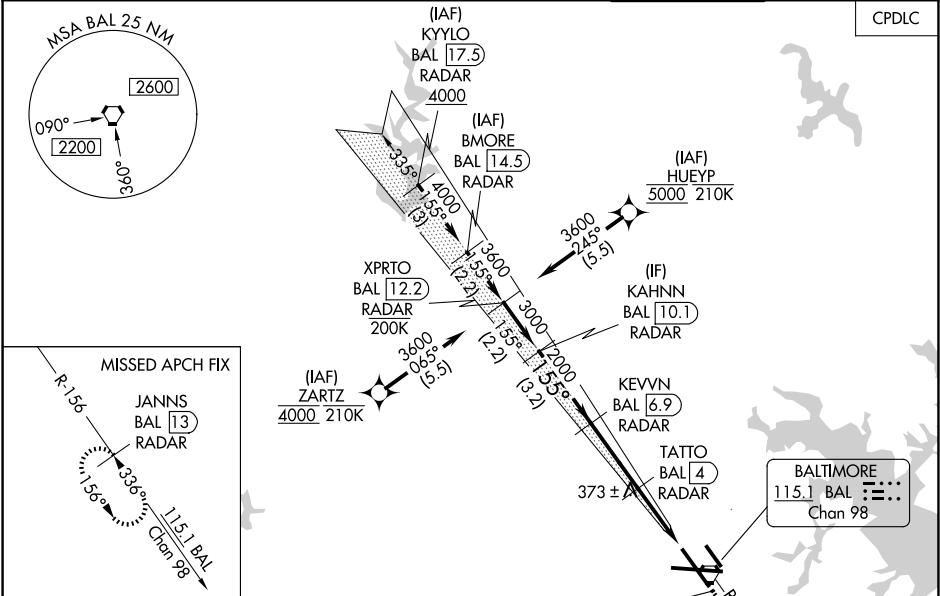
LOC I-FND	APP CRS	Rwy Ldg	8301
111.7	155°	TDZE	138
		Apt Elev	143

BALTIMORE/  
WASHINGTON INTL THURGOOD MARSHALL (BWI)

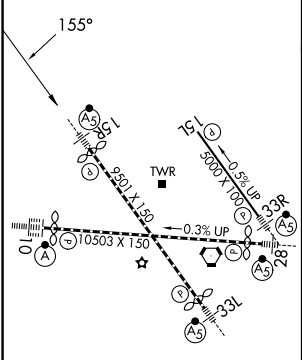
ILS or LOC RWY 15R

RNP APCH - GPS. From HUEYP or ZARTZ.	MALSR	MISSED APPROACH: Climb to 2500 on BAL VORTAC R-156 to JANNIS/BAL 13 DME/RADAR and hold.
DME or RADAR required. RADAR required for procedure entry at KYILO or BMORE.		
Simultaneous approach authorized with Rwy 15L. DME from BAL VORTAC. For inop ALS, increase LOC Cat C/D visibility to 1 3/8 SM. * RVR 1800 authorized with use of FD or AP or HUD to DA.		

D-ATIS	POTOMAC APP CON	BALTIMORE TOWER	GND CON	CLNC DEL
115.1 127.8	119.0 282.275 (020°-100°) 119.7 290.475 (131°-180°) 124.55 317.425 (101°-130°) 128.7 307.9 (181°-019°)	119.4 257.8	121.9	118.05



ELEV 143	D	TDZE 138
----------	---	----------



TDZ/CL Rwy 10 and 33L REIL Rwy 15L and 33R HIRL all Rwy					
FAF to MAP 5.7 NM					
Knots	60	90	120	150	180
Min:Sec	5:42	3:48	2:51	2:17	1:54

VGSi and ILS glidepath not coincident (VGSi Angle 3.00/TCH 73).				
CATEGORY	A	B	C	D
S-ILS 15R*	338/24 200 (200-1/2)			
S-LOC 15R	640/24	502 (500-1/2)	640/55	502 (500-1)
CIRCLING	640-1 497 (500-1)	660-1 517 (600-1)	700-1 1/2 557 (600-1 1/2)	880-2 1/4 737 (800-2 1/4)