

LOC I-BAL  
**109.7**

APP CRS  
**105°**

Rwy Ldg **9953**  
TDZE **143**  
Apt Elev **143**

BALTIMORE/  
WASHINGTON INTL THURGOOD MARSHALL (BWI)

ILS or LOC RWY 10

BALTIMORE TOWER  
**119.4 257.8**

GND CON  
**121.9**

CLNC DEL  
**118.05**

RADAR required for procedure entry.  
DME or RADAR required.

ALSF-2

MISSED APPROACH: Climb to 2500 on BAL VORTAC  
R-105 to HURTZ/BAL 12.3 DME/RADAR and hold.

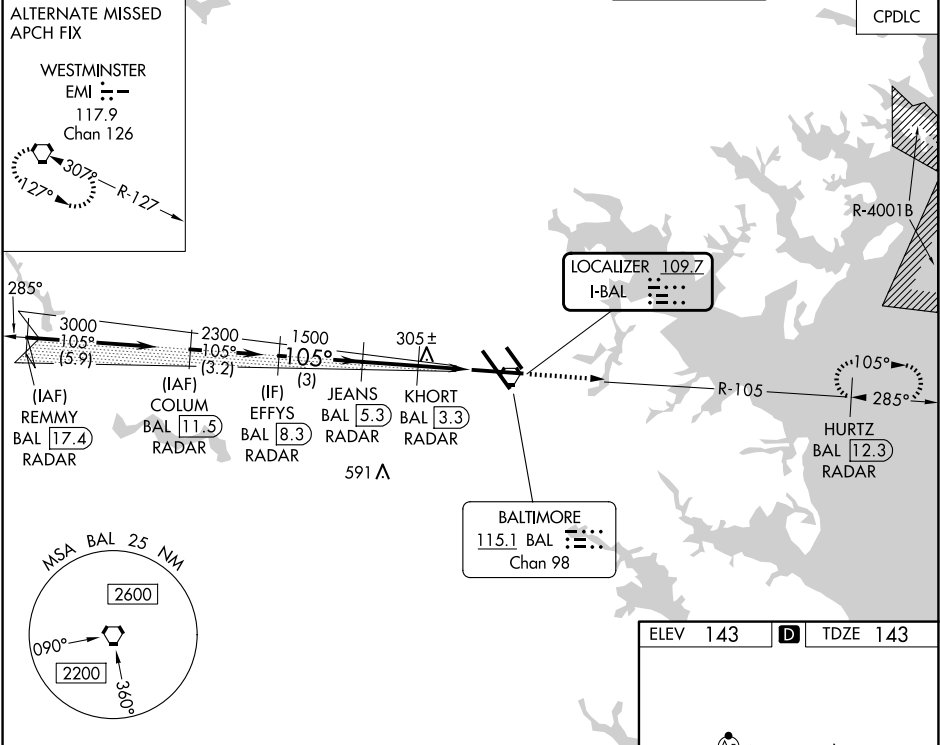
D-ATIS  
**115.1 127.8**

POTOMAC APP CON  
**119.0 282.275** (020°-100°) **119.7 290.475** (131°-180°)  
**124.55 317.425** (101°-130°) **128.7 307.9** (181°-019°)

BALTIMORE TOWER  
**119.4 257.8**

GND CON  
**121.9**

CLNC DEL  
**118.05**



VGSI and ILS glidepath not coincident (VGSI Angle 3.00/TCH 71).

CATEGORY	A	B	C	D
S-ILS 10	343/18 200 (200-1/2)			
S-LOC 10	580/24 437 (500-1/2)		580/40 437 (500-3/4)	
CIRCLING	640-1 497 (500-1)	660-1 517 (600-1)	700-1 1/2 557 (600-1 1/2)	880-2 1/4 737 (800-2 1/4)

ELEV 143 **D** TDZE 143

BALTIMORE, MARYLAND  
Amdt 22 05SEP24

BALTIMORE/WASHINGTON INTL THURGOOD MARSHALL (BWI)  
39°11'N-76°40'W

ILS or LOC RWY 10