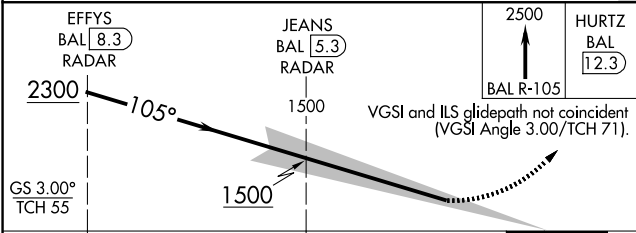
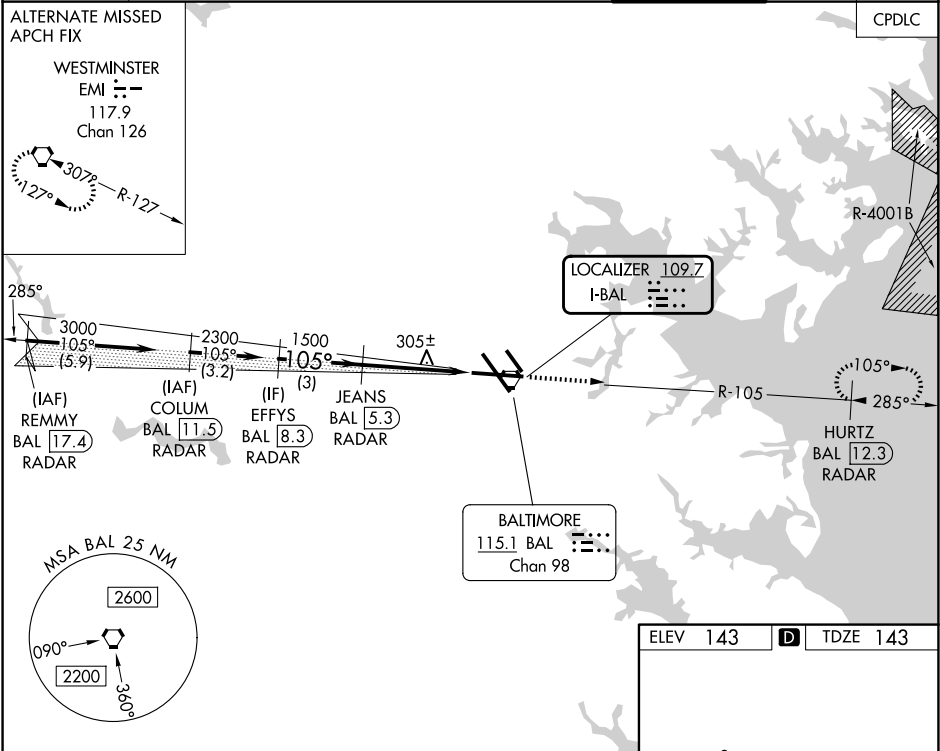


LOC I-BAL	APP CRS	Rwy Ldg	9953
109.7	105°	TDZE	143
		Apt Elev	143

BALTIMORE/ ILS RWY 10 (CAT II & III)  
WASHINGTON INTL THURGOOD MARSHALL (BWI)

RADAR required for procedure entry. DME or RADAR required.	ALSF-2	MISSED APPROACH: Climb to 2500 on BAL VORTAC R-105 to HURTZ/BAL 12.3 DME/RADAR and hold.
▼	ⓘ	

D-ATIS	POTOMAC APP CON	BALTIMORE TOWER	GND CON	CLNC DEL
115.1 127.8	119.0 282.275 (020°-100°) 119.7 290.475 (131°-180°) 124.55 317.425 (101°-130°) 128.7 307.9 (181°-019°)	119.4 257.8	121.9	118.05



CATEGORY	A	B	C	D
S-ILS 10	CAT II	RA 105/12	100	DA 243
S-ILS 10	CAT III	RVR 06		

CATEGORY II & III ILS - SPECIAL AIRCREW  
& AIRCRAFT CERTIFICATION REQUIRED

