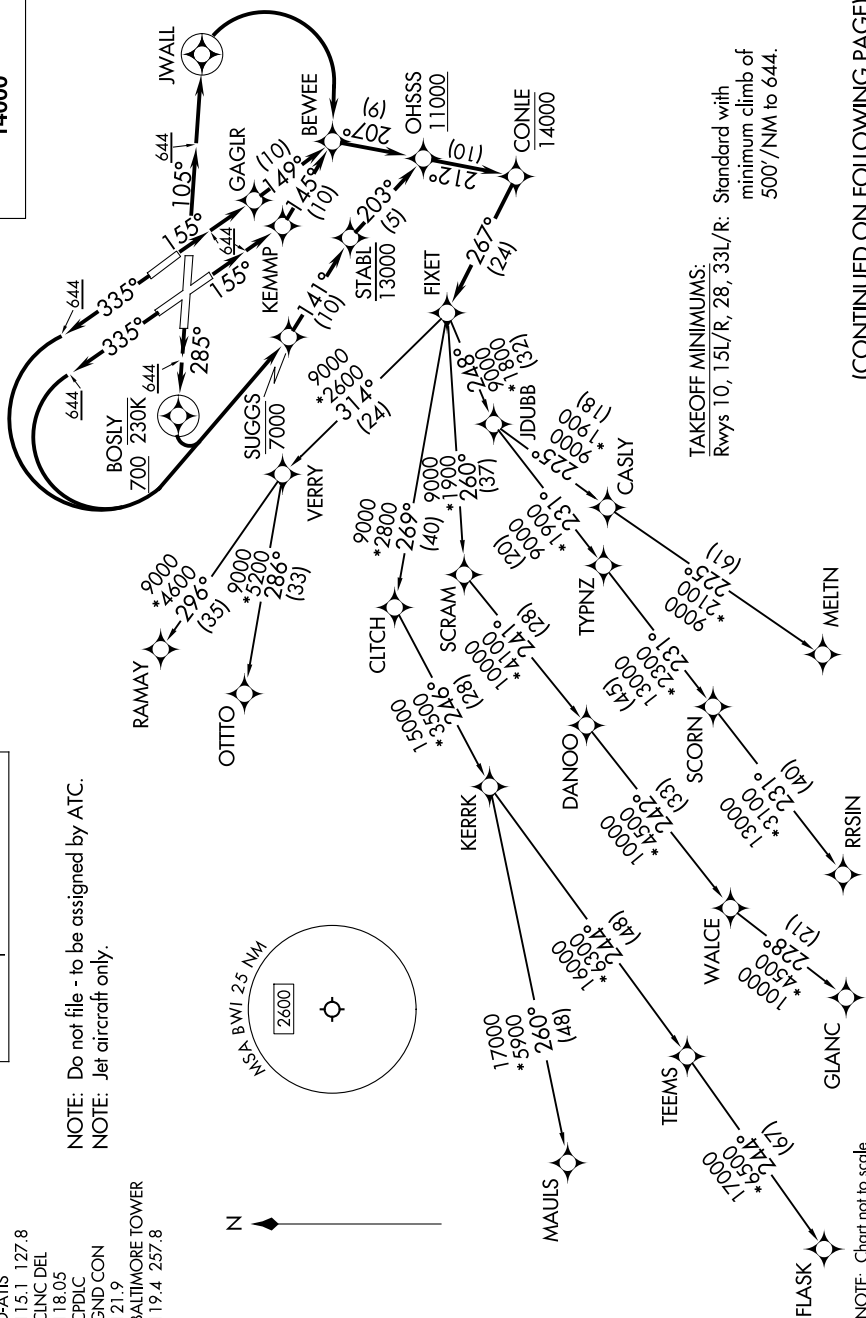


FIXET FIVE DEPARTURE (RNAV)

AL-804 (FAA)

BALTIMORE/
WASHINGTON INTL THURGOOD MARSHALL (BWI)
BALTIMORE, MARYLAND

TOP ALTITUDE:
14000



NOTE: Chart not to scale.

(CONTINUED ON FOLLOWING PAGE)

TAKEOFF MINIMUMS:

Rwys 10, 15L/R, 28, 33L/R: Standard with minimum climb of 500' / NM to 644.

RNAV 1-DME/DME/IRU or GPS.
RADAR required.

NOTE: Do not file - to be assigned by ATC.
NOTE: Jet aircraft only.

POTOMAC DEP CON
124.55 317.425
D-ATIS
115.1 127.8
CLINC DEL
118.05
CPDLC
GND CON
121.9
BALTIMORE TOWER
119.4 257.8

FIXET FIVE DEPARTURE (RNAV)
(FIXET5.FIXET) 17APR25

BALTIMORE/ BALTIMORE, MARYLAND
WASHINGTON INTL THURGOOD MARSHALL (BWI)