

BALTIMORE/
WASHINGTON INTL THURGOOD MARSHALL (BWI)
BALTIMORE, MARYLAND

DUKPN ONE DEPARTURE (RNAV)

POTOMAC DEP CON
124.55 317.425
D-ATIS
115.1 127.8
CLINC DEL
118.05
CPDLC
GND CON
121.9
BALTIMORE TOWER
119.4 257.8

NOTE: Jet aircraft only.

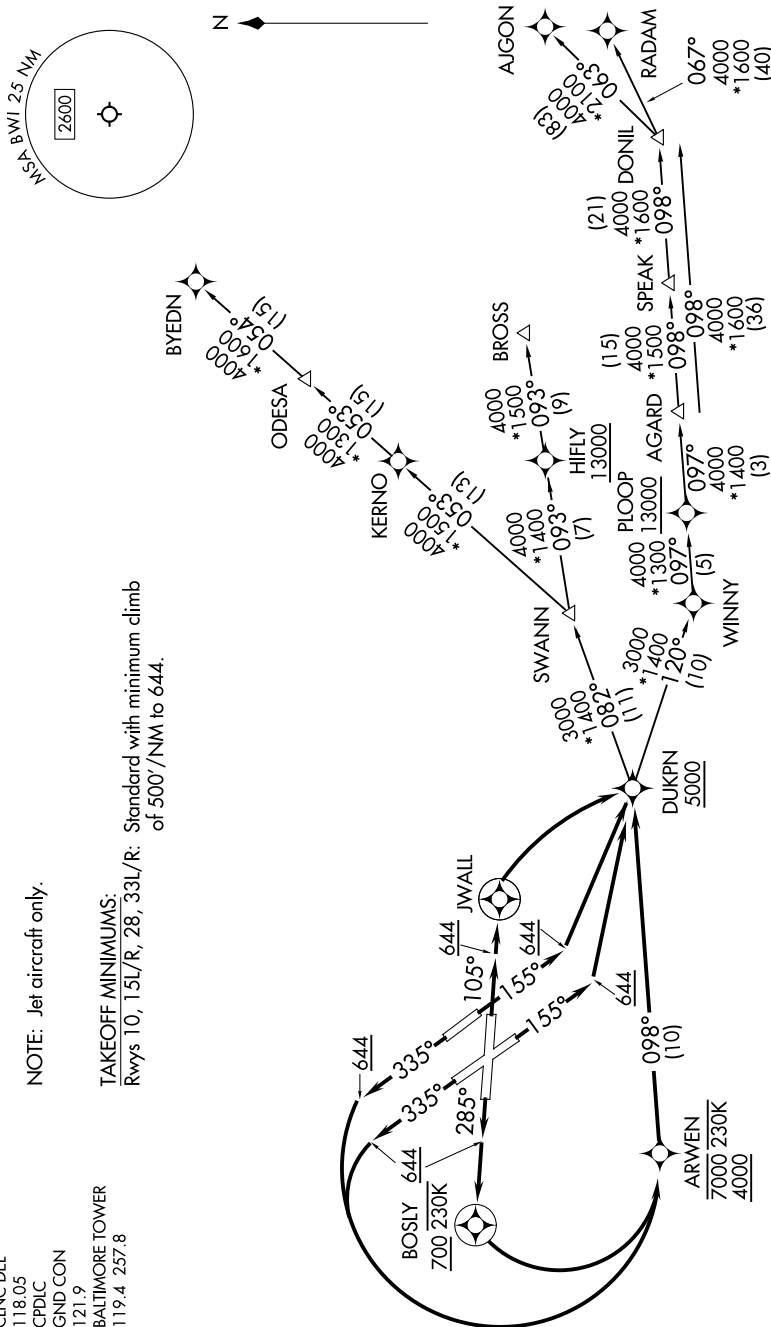
TAKEOFF MINIMUMS:

Rwys 10, 15L/R, 28, 33L/R: Standard with minimum climb of 500'/NM to 644.

RNAV 1 - DME/DME/IRU or GPS.

RADAR required for non-GPS equipped aircraft.

TOP ALTITUDE:
14000



NOTE: Chart not to scale.

(CONTINUED ON FOLLOWING PAGE)

NE-3, 07 AUG 2025 to 04 SEP 2025

DUKPN ONE DEPARTURE (RNAV)
(DUKPN1.DUKPN) 11 JUL24

BALTIMORE/ BALTIMORE, MARYLAND
WASHINGTON INTL THURGOOD MARSHALL (BWI)