

25219

VOR/DME PRX <u>113.6</u> Chan 83	APP CRS 350°	Rwy Ldg 6002 TDZE 532 Apt Elev 548
--	------------------------	---

VOR RWY 35
COX FLD (PRX)



Rwy 35 helicopter visibility reduction below $\frac{3}{4}$ SM NA.

MISSED APPROACH: Climb to 2000 then climbing right turn to 2300 direct PRX VOR/DME and hold.

AWOS-3PT 119.675	FORT WORTH CENTER 124.875 370.95	UNICOM 122.975 (CTAF) 0
----------------------------	--	-----------------------------------

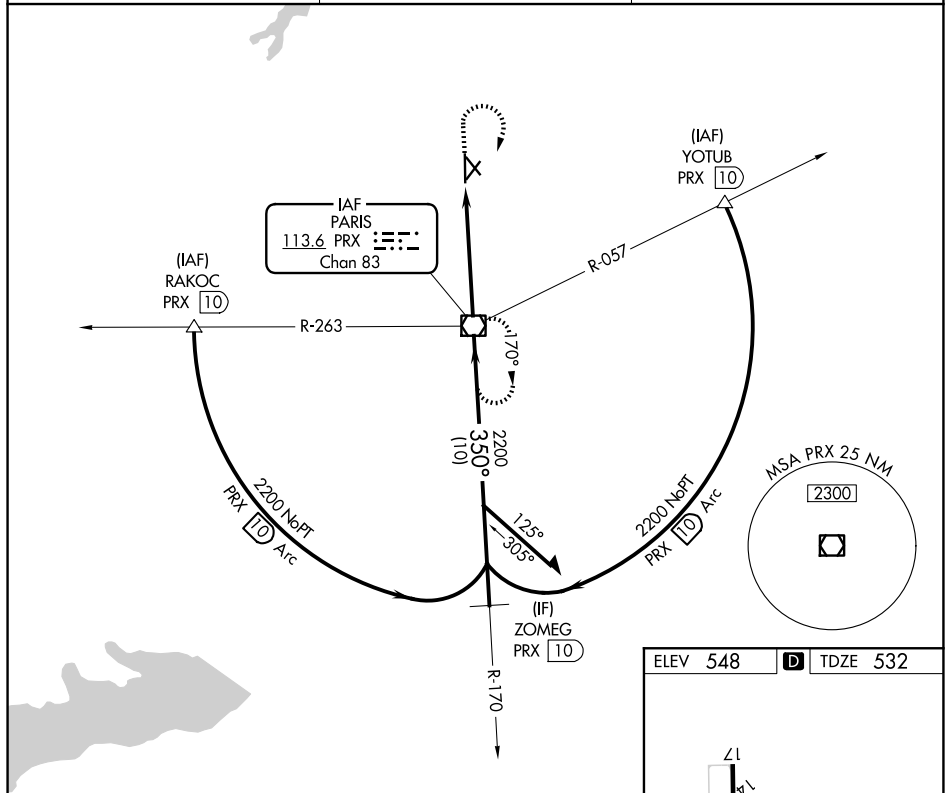
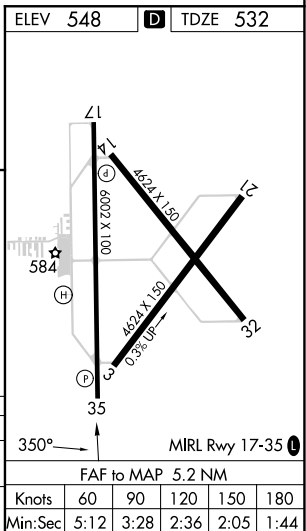


Diagram illustrating the VGS (Vertical Guidance System) and its relationship to the TCH (Threshold Crossing Height) and the VOR/DME station. The diagram shows a flight path starting from a point 1.2 NM from the TCH, ascending at 350° to a point 3.9 NM from the TCH, and then descending at 170° to the TCH. The VGS is shown as a dashed line, and the TCH is marked with a cross. The diagram also shows the VOR/DME station and the PRX (Precision Required) point. The VGS and descent angles are not coincident (VGS Angle 3.00/TCH 40).

CATEGORY	A	B	C	D
S-35	960-1	428 (500-1)	960-1¼	428 (500-1¼)
CIRCLING	1060-1	512 (600-1)	1100-1½ 552 (600-1½)	1220-2¼ 672 (700-2¼)



PARIS, TEXAS
Amdt 2C 23FEB23

33°38'N-95°27'W

COX FLD (PRX)
VOR RWY 35

SC-2, 07 AUG 2025 to 04 SEP 2025