

WAAS CH <b>63001</b> <b>W35A</b>	APP CRS <b>355°</b>	Rwy Ldg TDZE <b>532</b> Apt Elev <b>548</b>
--	------------------------	---

RNAV (GPS) RWY 35

COX FLD (PRX)

RNP APCH - GPS.

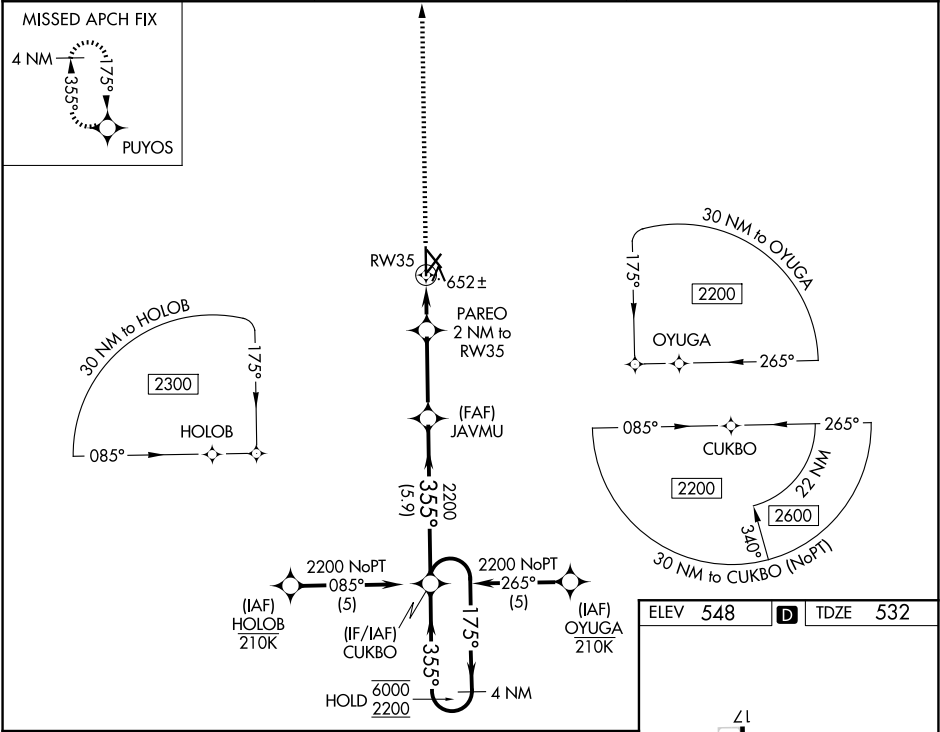
▼

⚠

For uncompensated Baro-VNAV systems, LNAV/VNAV NA below -8°C or above 54°C. Baro-VNAV and VDP NA when using SLR altimeter setting. Rwy 35 helicopter visibility reduction below ¾ SM NA. When local altimeter setting not received, use SLR altimeter setting and increase LPV DA to 859 feet and all visibilities ¼ SM. Increase LNAV/VNAV DA to 1002 feet and all visibilities ¼ SM. Increase all MDAs 80 feet and LNAV visibility Cat C/D ¼ SM, and Circling visibility Cat C/D ¼ SM.

MISSED APPROACH:  
Climb to 2200 direct  
PUYOS and hold.

AWOS-3PT <b>119.675</b>	FORT WORTH CENTER <b>124.875 370.95</b>	UNICOM <b>122.975</b> (CTAF) <b>0</b>
----------------------------	--	--



2200	PUYOS	PAREO 2 NM to RW35	JAVMU 2200	CUKBO 4 NM Holding Pattern	6000 2200	GP 3.00° TCH 40
1.1 NM	0.9	3.1 NM	5.9 NM			
CATEGORY	A	B	C	D		
LPV DA		782-¾	250 (300-¾)			
LNAV/VNAV DA		925-1½	393 (400-1½)			
LNAV MDA	920-1	388 (400-1)	920-1½	388 (400-1½)		
CIRCLING	1060-1	512 (600-1)	1100-1½ 552 (600-1½)	1220-2¼ 672 (700-2¼)		

21

21

31

31

4624 X 150

4624 X 150

0.5% UP

584

6002 X 100

35

35°

MIRL Rwy 17-35 0