

WAAS CH <b>40228</b> <b>W16A</b>	APP CRS <b>162°</b>	Rwy Idg TDZE Apt Elev <b>7000</b> <b>4202</b> <b>4252</b>
--	------------------------	--

RNAV (GPS) RWY 16

WORLAND MUNI (WRL)

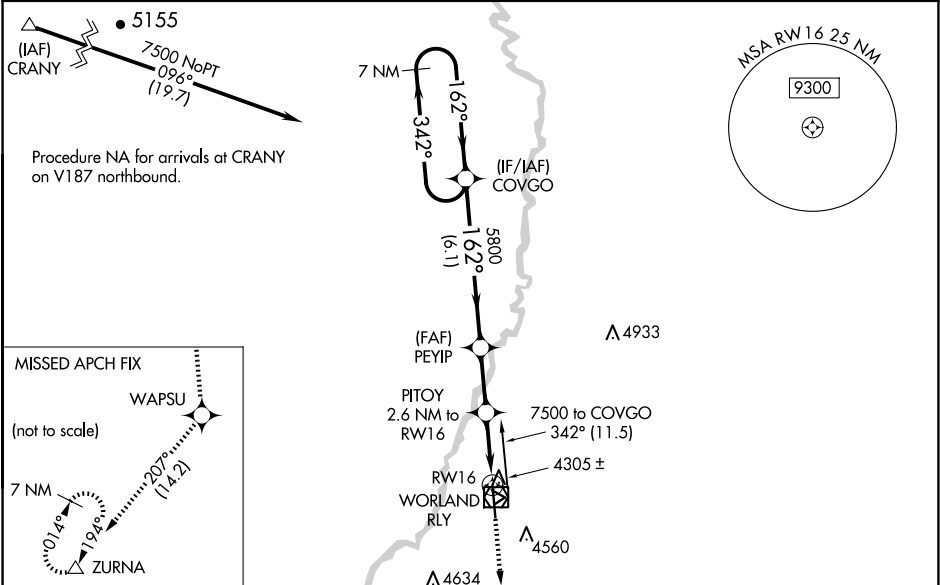
⚠

⚠

For uncompensated Baro-VNAV systems, LNAV/VNAV NA below -32°C (-25°F) or above 17°C (62°F). DME/DME RNP-0.3 NA. VDP and Baro-VNAV NA with Greybull altimeter setting. When local altimeter setting not received, use Greybull altimeter setting: increase LPV DA to 4574 feet, LNAV/VNAV DA to 4616 feet, and all MDA's 140 feet; increase LPV, LNAV/VNAV and LNAV all Cats, and Circling Cat C/D visibilities ½ SM. Helicopter visibility reduction below ¾ SM NA.

MISSED APPROACH: Climb to 9600 direct WAPSU and on track 207° to ZURNA and hold, continue climb-in-hold to 9600.

ASOS <b>135.475</b>	SALT LAKE CENTER <b>133.25 285.6</b>	UNICOM <b>123.05 (CTAF) 0</b>
------------------------	---	----------------------------------



VGSI and RNAV glidepath not coincident (VGSI Angle 3.00/TCH 41).

9600 WAPSU

↑

tr 207°

ZURNA

ELEV 4252 D TDZE 4202

7 NM Holding Pattern

COVGO

7500

342°

162°

162°

5800

PEYIP

5800

PITOTY

2.6 NM to RW16

\*1.1 NM to RW16

RW16

\*5040

6.1 NM

2.3 NM

1.5 NM

1.1 NM

GP 3.00°

TCH 55

CATEGORY	A	B	C	D
LPV DA	4452-¾ 250 (200-¾)			
LNAV/VNAV DA	4494-⅞ 292 (300-⅞)			
LNAV MDA	4560-1 358 (400-1)		4560-1½ 358 (400-1½)	
CIRCLING	4920-1 668 (700-1)		4920-1¾ 5020-2½ 668 (700-1¾) 768 (800-2½)	

91

162° to RW16

4223

1.0° UP

2502 X 60

1.9° UP

7000 X 100

0.5° UP

2241 X 60

34

REIL Rwy 16 and 34

MIRL Rwy 16-34