

WAAS	APP CRS	Rwy Idg	5343
CH 97421	053°	TDZE	124
W05A		Apt Elev	125

RNAV (GPS) RWY 5

LUMBERTON RGNL (LBT)

RNP APCH - GPS.

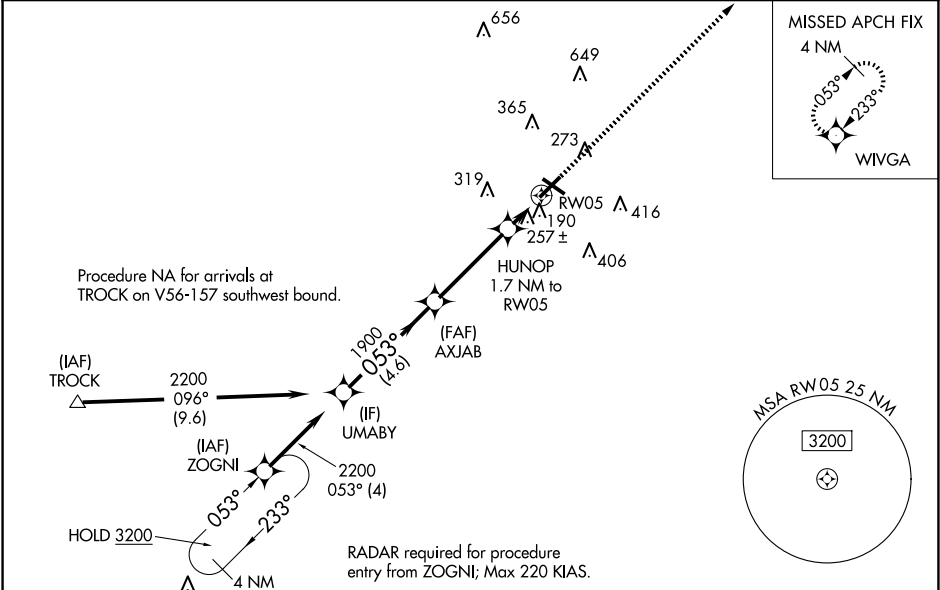
▼

▲

When local altimeter setting not received, use Maxton altimeter setting: increase LPV DA to 383 feet; LNAV/VNAV DA to 594 feet and all visibility ¼ SM; increase all MDAs 60 feet and LNAV visibility Cat C and Circling Cat C ¼ SM. Baro-VNAV and VDP NA when using Maxton altimeter setting. Circling Rwy 13, 31 NA at night. For uncompensated Baro-VNAV systems, LNAV/VNAV NA below -15°C or above 54°C.

MISSED APPROACH:
Climb to 2000 direct
WIVGA and hold.

ASOS 134.775	FAYETTEVILLE APP CON 133.0 290.25	UNICOM 122.8 (CTAF) 0
-----------------	--------------------------------------	--------------------------



UMABY 2200 Procedure Turn NA GP 3.00° TCH 60	AXJAB 1900 HUNOP 1.7 NM to RW05 * 1.1 NM to RW05				2000 WIVGA * LNAV only.
	GP 3.00° TCH 60				
	4.6 NM 3.7 NM 0.6 NM 1.1 NM				
	CATEGORY	A	B	C	D
LPV DA	327-¾ 203 (300-¾)				NA
LNAV/VNAV DA	538-1⅛ 414 (500-1⅛)				NA
LNAV MDA	520-1	396 (400-1)	520-1⅛	396 (400-1⅛)	NA
CIRCLING	660-1	535 (600-1)	720-1½	595 (600-1½)	NA

