

24193

APP CRS	Rwy Idg	<b>7100</b>
<b>230°</b>	TDZE	<b>2552</b>
	Apt Elev	<b>2567</b>

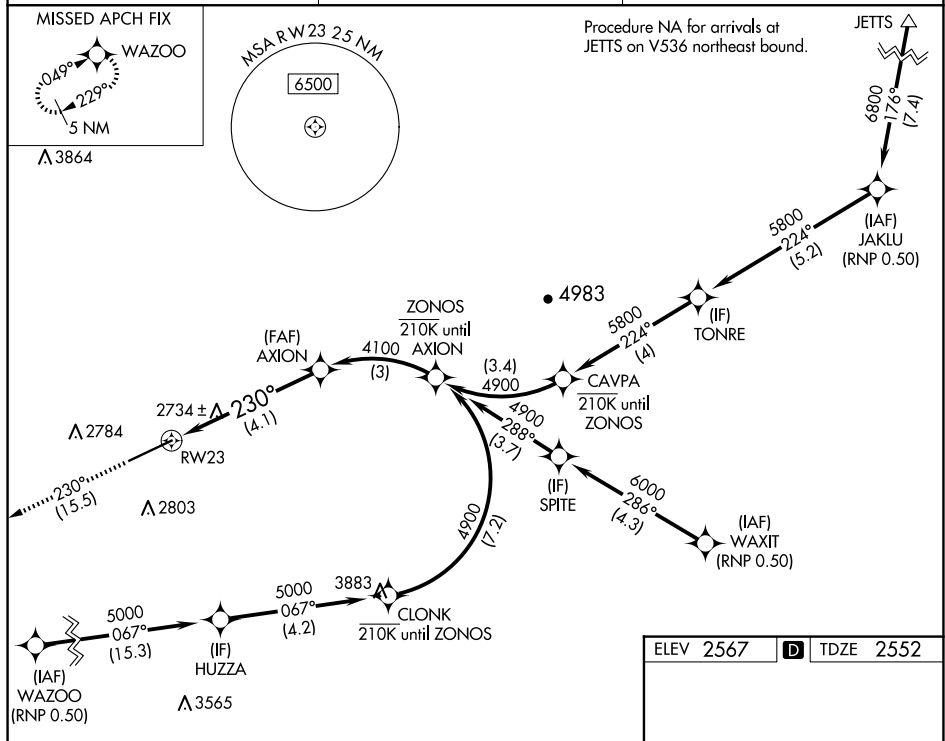
RNAV (RNP) Z RWY 23  
PULLMAN/MOSCOW RGNL (PUW)

RNP AR APCH. RF required.

**T** For uncompensated Baro-VNAV systems, procedure NA below  
**A** NA -20°C or above 50°C.

**MISSED APPROACH:** Climb to 5000 on track 230° to WAZOO and hold.

ASOS <b>135.675</b>	SEATTLE CENTER <b>123.95 290.55</b>	UNICOM <b>122.8 (CTAF) ①</b>
------------------------	--	---------------------------------



See planview for multiple IF locations.

5000  
↑  
ir 230°

WAZOO

RW23

230°

4100

AXION

4.1 NM

GP 3.40°  
TCH 59

CATEGORY	A	B	C	D
RNP 0.22 DA	3041-1 $\frac{3}{8}$ 489 (500-1 $\frac{3}{8}$ )			
RNP 0.30 DA	3146-1 $\frac{3}{4}$ 594 (600-1 $\frac{3}{4}$ )			

**AUTHORIZATION REQUIRED**

ELEV 2567 TDZE 2552

230°

2593

7100 X 150

REIL Rwy 23

HIRL Rwy 5-23

NW-1, 07 AUG 2025 to 04 SEP 2025

NW-1, 07 AUG 2025 to 04 SEP 2025

PULLMAN/MOSCOW, WASHINGTON  
Orig 10OCT19

46°45'N-117°07'W

PULLMAN/MOSCOW RGNL (PUW)  
RNAV (RNP) Z RWY 23