

LOC/DME I-PUW	APP CRS	Rwy Idg	7100
110.35	050°	TDZE	2567
Chan 40(Y)		Apt Elev	2567

ILS or LOC RWY 5

PULLMAN/MOSCOW RGNL (PUW)

DME required.

▼

▲

For inop ALS, increase S-ILS 5 all Cats visibility to RVR 4500 and S-LOC 5 Cat C/D visibility to 1½ SM.  
† RVR 1800 authorized with use of FD or AP or HUD to DA.

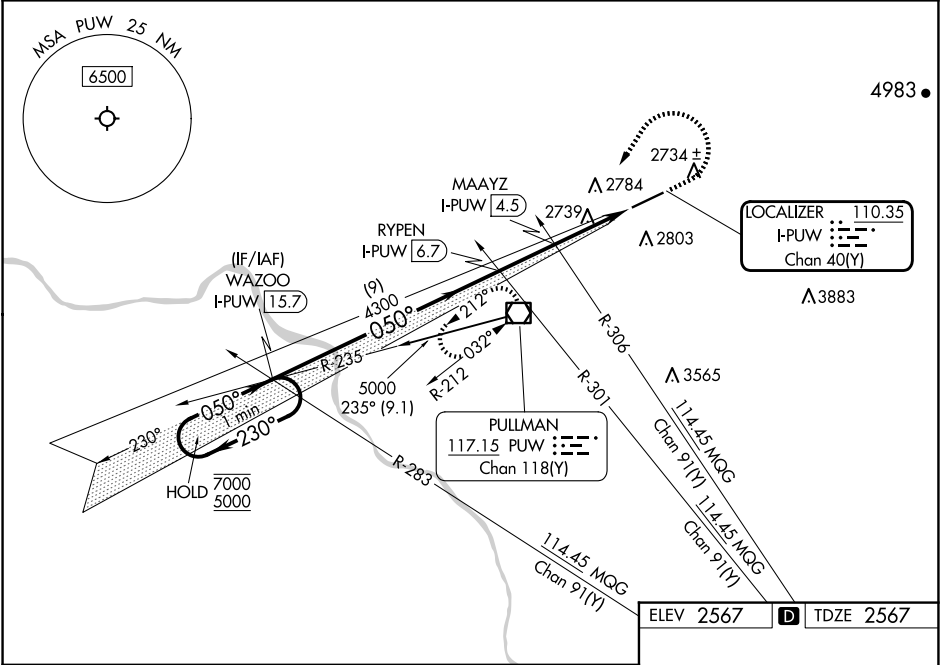
MALSR

AS

⬆

MISSED APPROACH: Climb to 3460 then climbing left turn to 6000 direct PUW VOR/DME, continue climb-in-hold to 6000.  
# Missed approach requires minimum climb of 222 feet per NM to 1810.

ASOS 135.675	SEATTLE CENTER 123.95 290.55	UNICOM 122.8 (CTAF) 1
-----------------	---------------------------------	--------------------------



<div>WAZOO I-PUW 15.7</div> <div>One Minute Holding Pattern</div> <div>7000 ← 230°</div> <div>5000 → 050°</div> <div>GS 3.00°</div> <div>TCH 50</div>				
<div>RYPEN I-PUW 6.7</div> <div>MAAYZ I-PUW 4.5</div> <div>* I-PUW 2.8</div> <div>* 3600</div> <div>9 NM</div> <div>2.2 NM</div> <div>1.7 NM</div> <div>1.4 NM</div>				
<div>3460</div> <div>6000</div> <div>PUW</div> <div>* LOC only</div>				
CATEGORY	A	B	C	D
S-ILS 5 #†	2767/24		200 (200-½)	
S-ILS 5	2857/24		290 (300-½)	
S-LOC 5	3060/24 493 (500-½)		3060/50 493 (500-1)	
CIRCLING	3080-1 513 (600-1)	3120-1 553 (600-1)	3140-1½ 573 (600-½)	3420-2¾ 853 (900-2¾)

050°

7100 X 150

2593

2593

2

REIL Rwy 23 1

HIRL Rwy 5-23 1

FAF to MAP 5.3 NM					
Knots	60	90	120	150	180
Min:Sec	5:18	3:32	2:39	2:07	1:46