

WAAS CH <b>86410</b> <b>W30A</b>	APP CRS <b>304°</b>	Rwy Idg TDZE Apt Elev	<b>6000</b> <b>549</b> <b>549</b>
--	------------------------	-----------------------------	---

RNAV (GPS) RWY 30

JEFFERSON CITY MEML (JEF)

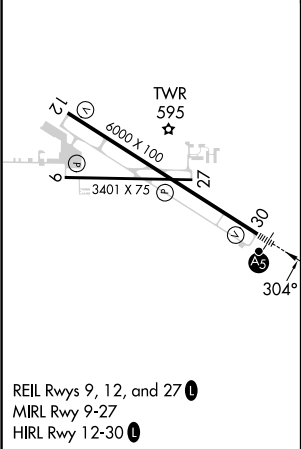
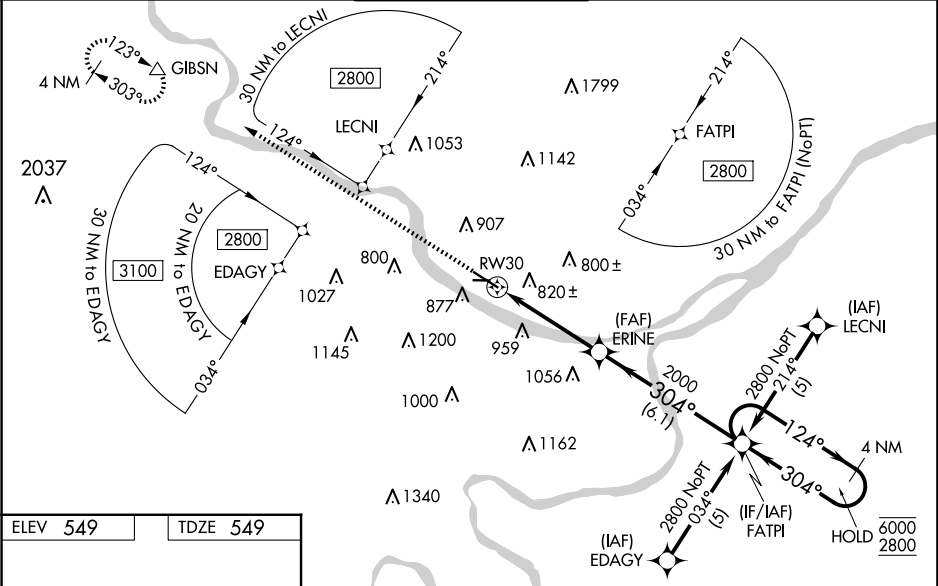
RNP APCH - GPS.

For uncompensated Baro-VNAV systems, LNAV/VNAV NA below -16°C or above 54°C. Circling Rwy 9 NA at night. When local altimeter setting not received, use COU altimeter setting and increase LPV DA to 879 feet; increase LNAV/VNAV DA to 1402 feet and all visibilities ¼ SM. Increase all MDAs 80 feet and LNAV visibility Cats B/C/D ¼ SM, and Circling visibility Cats A/B/C ¼ SM. Baro-VNAV and VDP NA when using COU altimeter setting. For inop ALS increase LNAV/VNAV visibility all Cats to 2½ SM. For inop ALS when using COU altimeter setting, increase LPV visibility all Cats to 1 SM and increase LNAV visibility Cats C/D to 2½ SM.

MALSR

MISSED APPROACH: Climb to 3000 direct GIBSN and hold.

ASOS <b>133.625</b>	MIZZU APP CON <b>124.375 353.925</b>	JEFFERSON CITY TOWER ★ <b>125.6</b> (CTAF) <b>0</b>	GND CON <b>121.7</b>	UNICOM <b>122.95</b>
------------------------	---	--	-------------------------	-------------------------



3000	GIBSN	VGSI and RNAV glidepath not coincident (VGSI Angle 3.00/TCH 50).			
		ERINE	FATPI	4 NM Holding Pattern	
		2 NM to RW30	2000	124°	6000
		2 NM	2.3 NM	304°	2800
		6.1 NM			GP 3.00° TCH 54
CATEGORY	A	B	C	D	
LPV DA	799-1½ 250 (300-½)				
LNAV/VNAV DA	1322-1¾ 773 (800-1¾)				
LNAV MDA	1240-½ 691 (700-½)		1240-1½ 691 (700-1½)		
<b>C</b> CIRCLING	1280-1 731 (800-1)		1320-2¼ 771 (800-2¼) 1560-3 1011 (1100-3)		