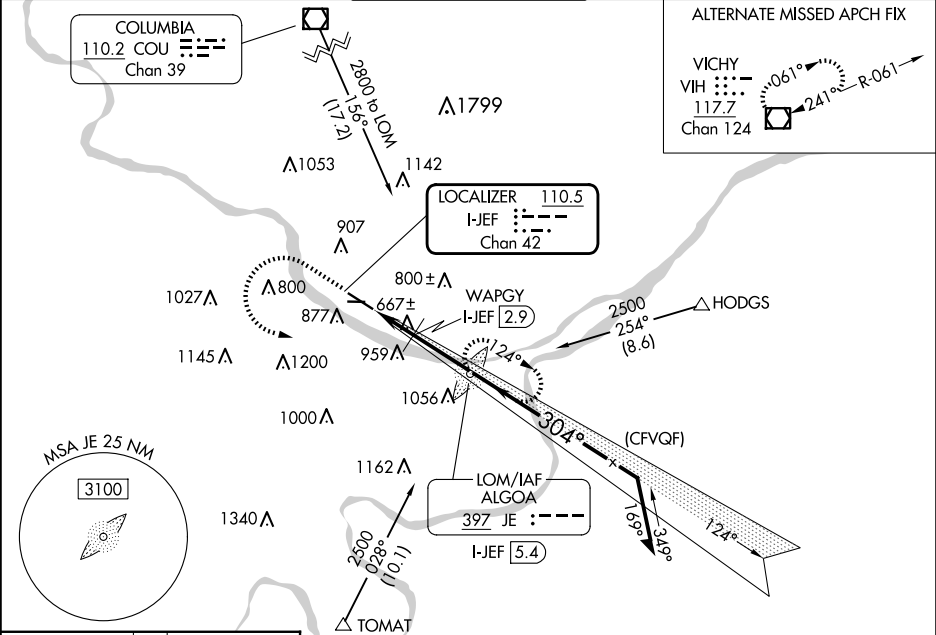


LOC/DME I-JEF	APP CRS	Rwy Idg	6000
110.5	304°	TDZE	549
Chan 42		Apt Elev	549

ILS or LOC RWY 30

JEFFERSON CITY MEML (JEF)

ADF required. Circling Rwy 9 NA at night. For inop ALS increase S-LOC 30 Cats C/D visibility to 1¾ SM and WAPGY fix minimums: S-LOC 30 Cats C/D visibility to 1 SM.		MALSR 	MISSED APPROACH: Climb to 1500 then climbing left turn to 2800 direct ALGOA LOM and hold, continue climb-in-hold to 2800.	
ASOS 133.625	MIZZU APP CON 124.375 353.925	JEFFERSON CITY TOWER★ 125.6 (CTAF) 0	GND CON 121.7	UNICOM 122.95



ELEV 549

TDZE 549

HIRL Rwy 12-30

MIRL Rwy 9-27

REIL Rws 9, 12, and 27

FAF to MAP 4.2 NM

Knots	60	90	120	150	180
Min:Sec	4:12	2:48	2:06	1:41	1:24

1500 2800 JE		JE LOM ALGOA I-JEF 5.4		VGSI and ILS glidepath not coincident (VGSI Angle 3.00/TCH 50).	
WAPGY I-JEF 2.9		1941		Remain within 10 NM	
I-JEF 1.2		1160		2500	
I-JEF 2.2		1160		2000	
1 NM		0.8		2.5 NM	
CATEGORY	A	B	C	D	
S-ILS 30	749-1½		200 (200-½)		
S-LOC 30	1160-1½	611 (700-½)	1160-1¾	611 (700-1¾)	
CIRCLING	1280-1	731 (800-1)	1320-2¼	1560-3	1011 (1100-3)
WAPGY FIX MINIMUMS					
S-LOC 30	920-½	371 (400-½)	920-5/8	371 (400-5/8)	
CIRCLING	1280-1	731 (800-1)	1320-2¼	1560-3	1011 (1100-3)