

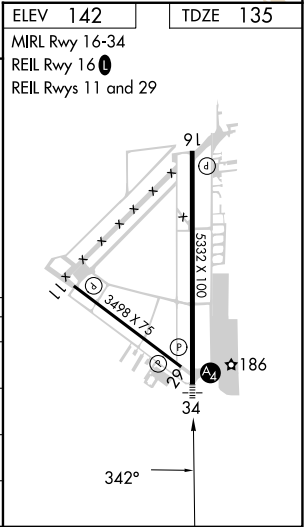
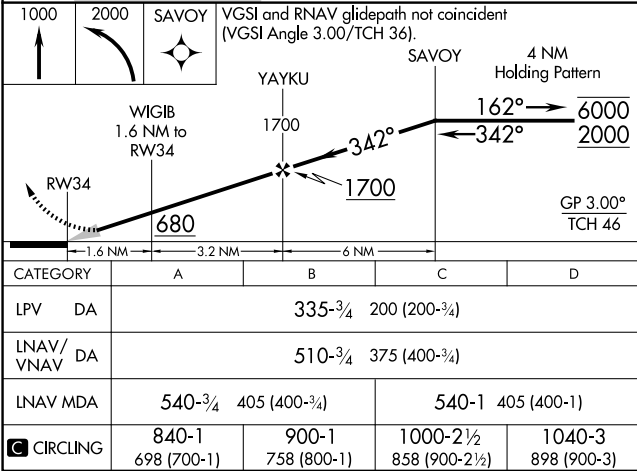
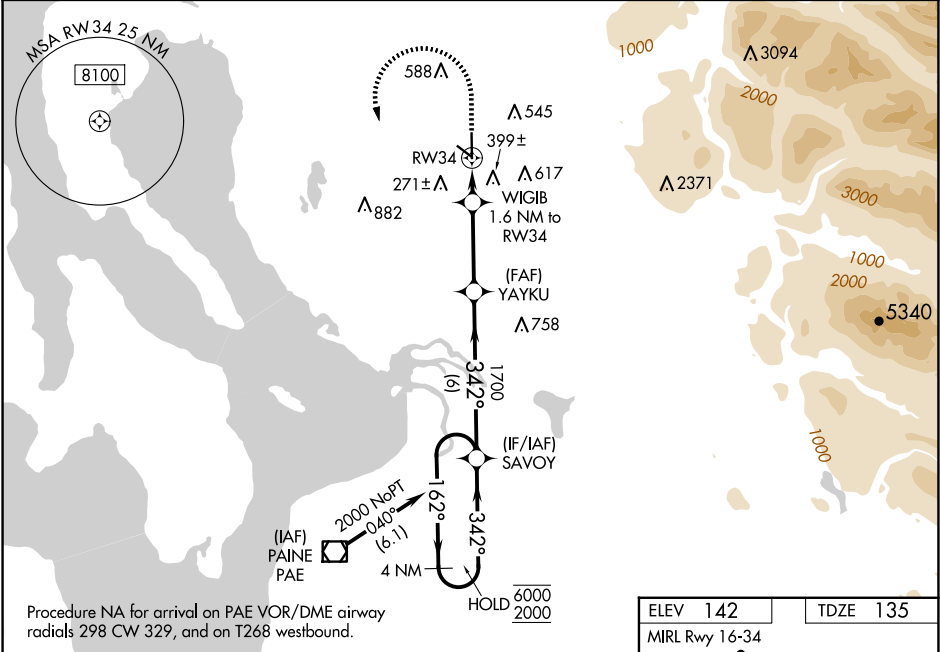
WAAS CH 90324 W34A	APP CRS 342°	Rwy Idg 5332 TDZE 135 Apt Elev 142
--	------------------------	---

RNAV (GPS) RWY 34

ARLINGTON MUNI (A WO)

RNP APCH-GPS.		MALS	MISSED APPROACH: Climb to 1000 then climbing left turn to 2000 direct SAVOY and hold.
⚠ Inop table does not apply to LPV. For uncompensated Baro-VNAV systems, LNAV/VNAV NA below -15°C or above 54°C. For inop ALS, increase LNAV/VNAV all Cats visibility to 1½ SM and LNAV Cat C and D visibility to 1½ SM.		Ⓜ	

AWOS-3PT 135.625	SEATTLE APP CON 128.5 306.9	CLNC DEL 121.725	CTAF 122.725 0
----------------------------	---------------------------------------	----------------------------	--------------------------



NW-1, 07 AUG 2025 to 04 SEP 2025

NW-1, 07 AUG 2025 to 04 SEP 2025