

VICTORVILLE, CALIFORNIA

AL-794 (FAA)

25051

WAAS CH 97746 W35A	APP CRS 346°	Rwy Idg 13052 TDZE 2885 Apt Elev 2885
--	------------------------	--

RNAV (GPS) RWY 35

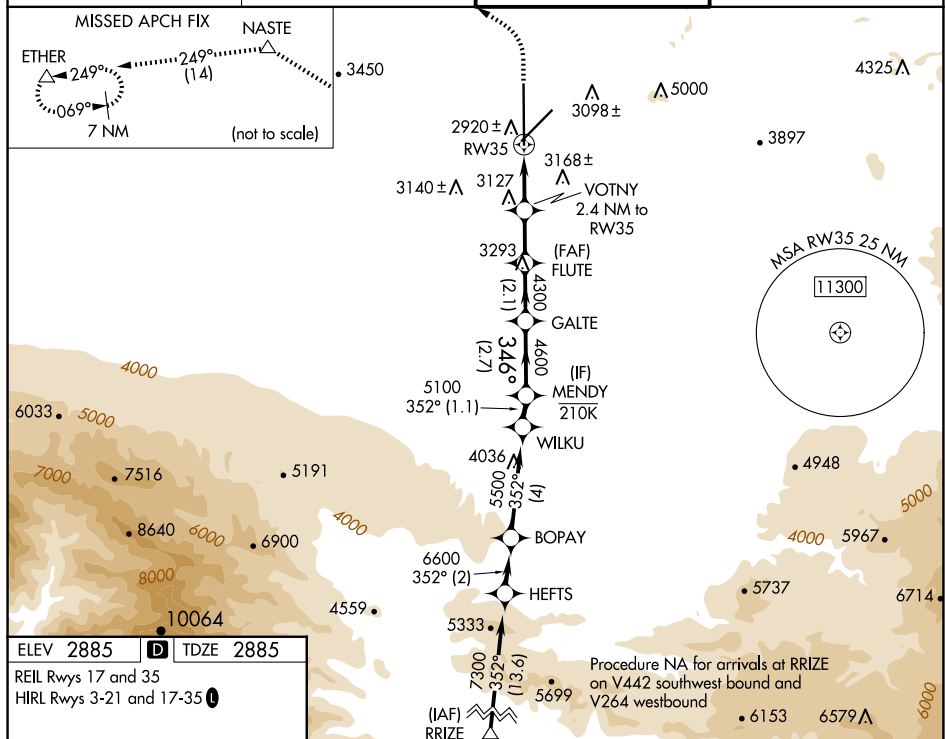
SOUTHERN CALIFORNIA LOGISTICS (VCSV)

RNP APCH - GPS.	
-----------------	--

T Circling NA for C and D southeast of Rwy 35 and 21.
A For uncompensated Baro-VNAV systems, LNAV/VNAV NA below -20°C or above 54°C.

MISSED APPROACH: Climb to 3500 then climbing left turn to 6000 direct NASTE and on track 249° to ETHER and hold.

ATIS 135.475	JOSHUA APP CON 124.55 363.0	VICTORVILLE TOWER ★ 118.35(CTAF) 0 282.225	GND CON 124.45
------------------------	---------------------------------------	--	--------------------------



3500 ↑	6000 ↖	NASTE △	tr 249°	ETHER △	VGSI and RNAV glidepath not coincident (VGSI Angle 3.00/TCH 64).			
CATEGORY								
LPV DA	3085-1 200 (200-1)							
RNAV/ VNAV	3411-1½ 526 (600-1½)							
RNAV MDA	3380-1 495 (500-1)				3380-1⅜ 495 (500-1⅜)			
CIRCLING	3380-1 495 (500-1)		3420-1 535 (600-1)		3460-1½ 575 (600-1½)		3760-2¾ 875 (900-2¾)	

VICTORVILLE, CALIFORNIA

Orig 25JAN24

SOUTHERN CALIFORNIA LOGISTICS (VCV)

34°36'N-117°23'W

RNAV (GPS) RWY 35

SW-3, 07 AUG 2025 to 04 SEP 2025

SW-3, 07 AUG 2025 to 04 SEP 2025