


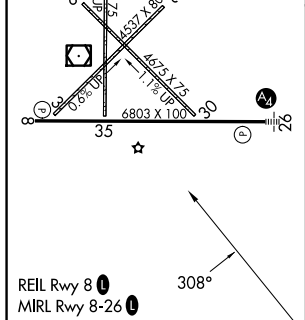
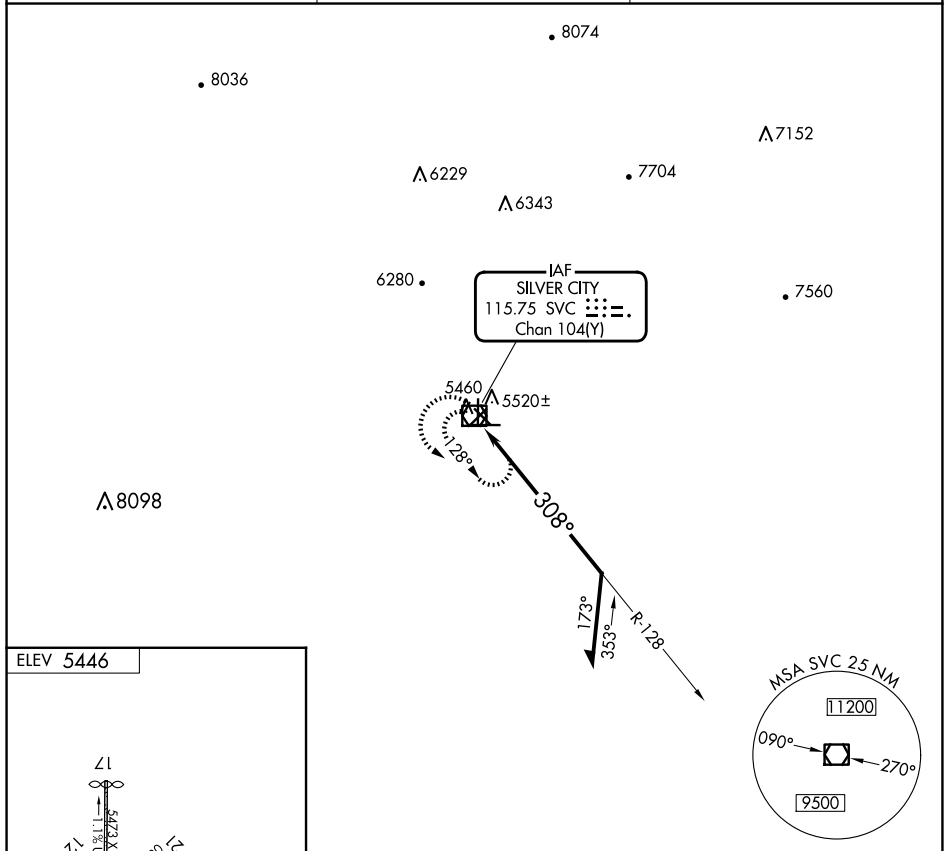
25163

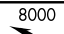
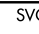
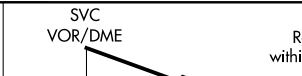
VOR/DME SVC 115.75 Chan 104 (Y)	APP CRS 308°	Rwy Ldg TDZE Apt Elev	N/A N/A 5446
---	------------------------	-----------------------------	---

VOR-A
GRANT COUNTY (SVC)

	<p>When local altimeter setting not received, procedure NA. Circling to Rwy 3, 12, 17, 21, 30, 35 NA at night.</p>	<p>MISSED APPROACH: Climbing left turn to 8000 via SVC R-128, then reverse course to SVC VOR/DME and hold.</p>
---	--	--

AWOS-3 126.725	ALBUQUERQUE CENTER 134.45 327.15	UNICOM 122.8 (CTAF)
--------------------------	--	---



<div>8000</div> <div></div> <div>SVC R-128</div>	<div>Reverse Course</div>	<div>SVC</div> <div></div>	<div></div> <div>SVC VOR/DME</div> <div>128°</div> <div>308°</div> <div>7300</div> <div>Remain within 10 NM</div>			
CATEGORY	A	B	C	D		
CIRCLING	5940-1 494 (500-1)	5960-1 514 (600-1)	6100-1 ³ / ₄ 654 (700-1 ³ / ₄)	6740-3 1294 (1300-3)		

SILVER CITY, NEW MEXICO
Amdt 7D 11AUG22

GRANT COUNTY (SVC)
VOR-A

32°38'N-108°09'W

SW-1, 07 AUG 2025 to 04 SEP 2025