

SILVER CITY, NEW MEXICO

AL-793 (FAA)

25163

WAAS CH <b>87100</b> <b>W26A</b>	APP CRS <b>262°</b>	Rwy Ldg <b>6803</b> TDZE <b>5380</b> Apt Elev <b>5446</b>
--	------------------------	---

RNAV (GPS) RWY 26  
GRANT COUNTY (SVC)

RNP APCH-GPS.

**T** Circling NA to Rwy 3, 12, 17, 21, 30 and 35. Inop  
**A** table does not apply to LPV and LNAV/VNAV. For  
uncompensated Baro-VNAV systems, LNAV/VNAV  
NA below -25°C or above 54°C.

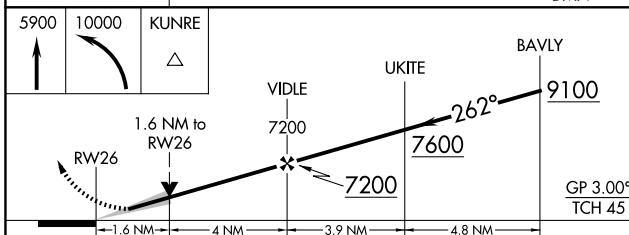
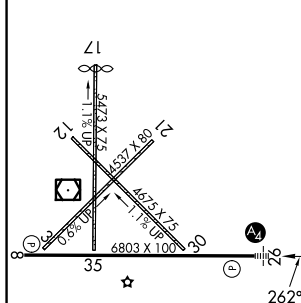
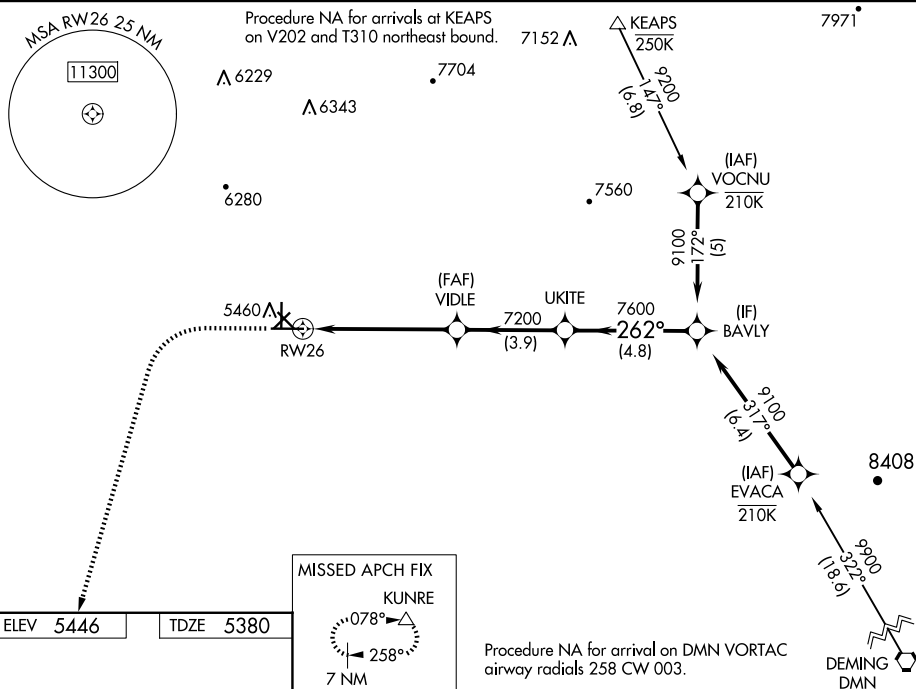
MALS




**MISSED APPROACH:** Climb to 5900 then climbing left turn to 10000 direct KUNRE and hold.

AWOS-3  
126.725

ALBUQUERQUE CENTER  
134.45 327.15

UNICOM  
122.8 (CTAF) **L**

CATEGORY		A	B	C	D
LPV	DA	5630- $\frac{3}{4}$ 250 (200- $\frac{3}{4}$ )			
INAV/ VNAV	DA	5630- $\frac{3}{4}$ 250 (200- $\frac{3}{4}$ )			
INAV	MDA	5940- $\frac{3}{4}$ 560 (500- $\frac{3}{4}$ )		5940-1 $\frac{3}{8}$ 560 (500-1 $\frac{3}{8}$ )	
 CIRCLING		5940-1 494 (500-1)	5960-1 514 (600-1)	6100-1 $\frac{3}{4}$ 654 (700-1 $\frac{3}{4}$ )	6740-3 1294 (1300-3)

SILVER CITY, NEW MEXICO

Amdt 1 19MAY22

GRANT COUNTY (SVC)

32°38'N-108°09'W

RNAV (GPS) RWY 26

SW-1, 07 AUG 2025 to 04 SEP 2025

SW-1, 07 AUG 2025 to 04 SEP 2025