

| | | | |
|-------------|---------|----------|------|
| VOR/DME VEL | APP CRS | Rwy Idg | 7000 |
| 114.15 | 329° | TDZE | 5274 |
| Chan 88 (Y) | | Apt Elev | 5274 |

VOR RWY 35

VERNAL RGNL (VEL)

⚠

⚠

❄

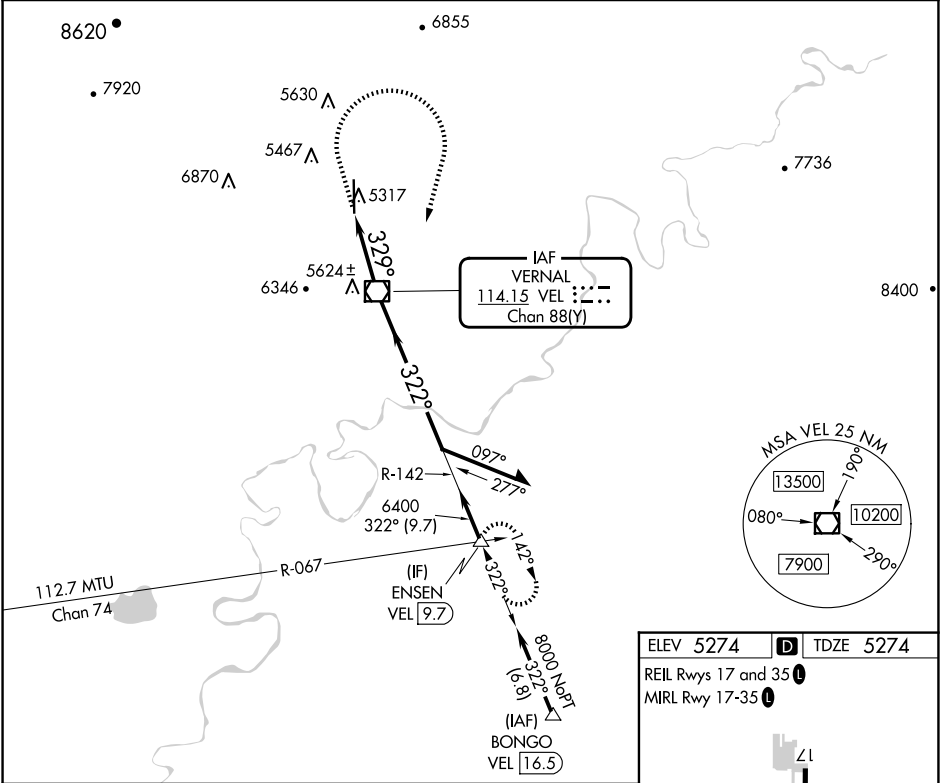
Circling NA west of Rwy 17-35.

Rwy 35 helicopter visibility reduction below ¾ NA.

-26°C

MISSED APPROACH: Climb to 6200 then climbing right turn to 8000 direct VEL VOR/DME and on VEL VOR/DME R-142 to ENSEN INT/9.7 DME and hold.

| | | |
|-----------------|-----------------------------------|--------------------------|
| ASOS 118.125 | SALT LAKE CENTER 119.95 377.15 | UNICOM 122.7 (CTAF) 0 |
|-----------------|-----------------------------------|--------------------------|



6200

8000

VEL

VEL R-142

ENSEN

VGSI and descent angles not coincident (VGSI Angle 3.00/TCH 48).

VEL 3

3.42°

TCH 48

329°

6400

142°

8000

322°

Remain within 10 NM

| CATEGORY | A | B | C | D |
|----------|---------|--------------|-------------------------|-------------------------|
| S-35 | 6160-1¼ | 886 (900-1¼) | 6160-2½ | 886 (900-2½) |
| CIRCLING | 6160-1¼ | 886 (900-1¼) | 6160-2¾ 886 (900-2¾) | 6400-3 1126 (1200-3) |

ELEV 5274

TDZE 5274

REIL Rwys 17 and 35

MIRL Rwy 17-35

5325

7000 X100

35

329°

FAF to MAP 3 NM

| | | | | | |
|---------|------|------|------|------|------|
| Knots | 60 | 90 | 120 | 150 | 180 |
| Min:Sec | 3:00 | 2:00 | 1:30 | 1:12 | 1:00 |