

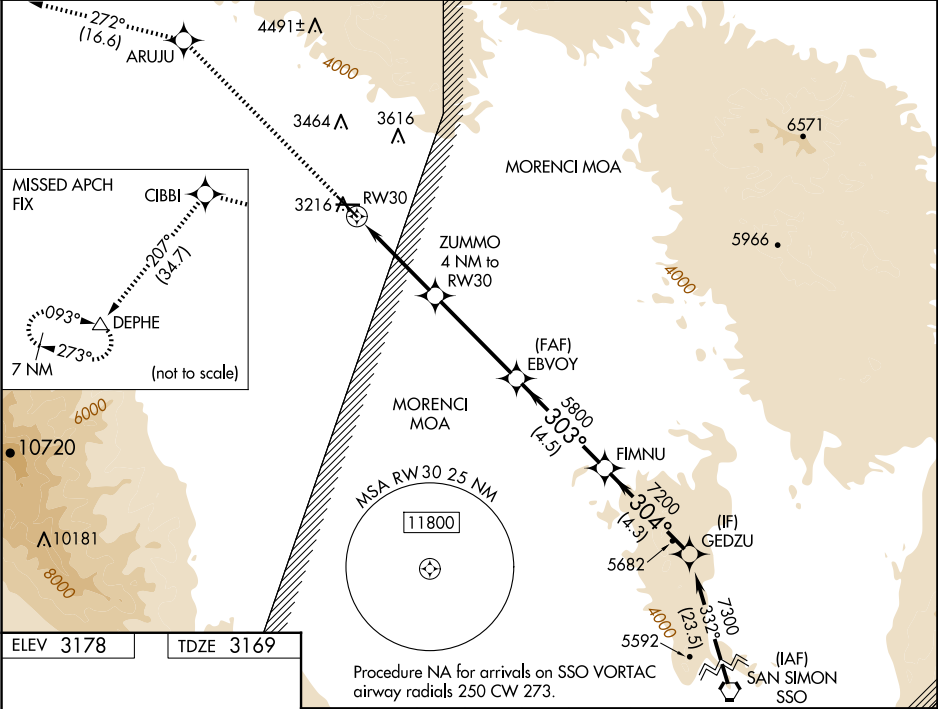
WAAS CH 78316 W30A	APP CRS 303°	Rwy Idg TDZE Apt Elev	6007 3169 3178
--	------------------------	-----------------------------	---

RNAV (GPS) RWY 30

SAFFORD RGNL/1LT DUANE SPALSBURY FLD (SAD)

RNP APCH - GPS.	MISSED APPROACH: Climb to 10000 direct ARUUJ and on track 272° to CIBBI and on track 207° to DEPHE and hold.
<div><div>▼</div><div>⚠</div></div> Circling to Rwy 8 NA at night. Circling NA northeast of Rwy 12 and north of Rwy 26. For uncompensated Baro-VNAV systems, LNAV/VNAV NA below -6°C or above 54°C.	

ASOS 124.175	ALBUQUERQUE CENTER 134.45 327.15	UNICOM 122.8 (CTAF) 0
------------------------	--	---------------------------------



ELEV 3178	TDZE 3169
-----------	-----------

