

WAAS CH 69516 W12A	APP CRS 123°	Rwy Idg TDZE Apt Elev	6007 3167 3178
--	------------------------	-----------------------------	---

RNAV (GPS) RWY 12

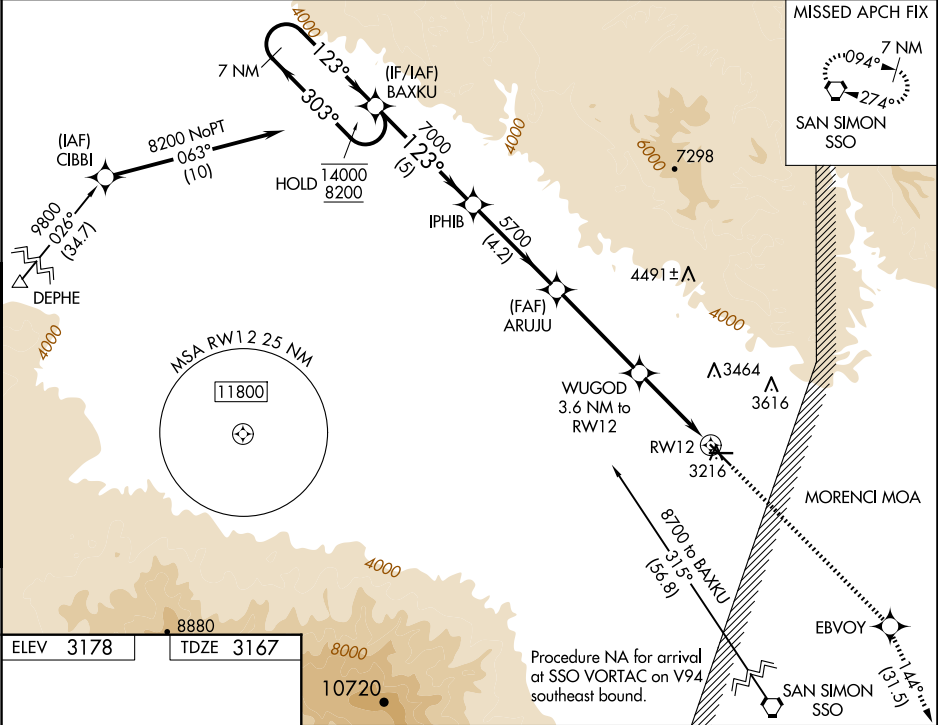
SAFFORD RGNL/1LT DUANE SPALSBURY FLD (SAD)

RNP APCH - GPS.

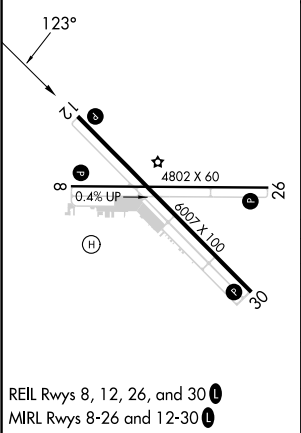
Circling NA at night. Circling NA northeast of Rwy 12 and north of Rwy 26. For uncompensated Baro-VNAV systems, LNAV/VNAV NA below -6°C or above 54°C.

MISSED APPROACH: Climb to 10000 direct EBVOY and on track 144° to SSO VORTAC and hold.

ASOS 124.175	ALBUQUERQUE CENTER 134.45 327.15	UNICOM 122.8 (CTAF) 0
------------------------	--	---------------------------------



ELEV 3178	TDZE 3167
-----------	-----------



7 NM Holding Pattern		BAXKU	IPHIB	ARUJU	WUGOD 3.6 NM to RW12	EBVOY 10000 ↑	tr 144° ✱	SSO ✧
14000 ← 303°	8200 123° →		7000	5700	5700	1 NM to RW12		
GP 3.00° TCH 40		5 NM	4.2 NM	4.2 NM	2.7 NM	1 NM		
CATEGORY	A	B	C	D				
LPV DA	3417-¾ 250 (300-¾)							
LNAV/VNAV DA	3417-¾ 250 (300-¾)							
LNAV MDA	3520-1 353 (400-1)							
CIRCLING	3580-1 402 (500-1)	3640-1 462 (500-1)	3640-1½ 462 (500-1½)	3900-2¼ 722 (800-2¼)				