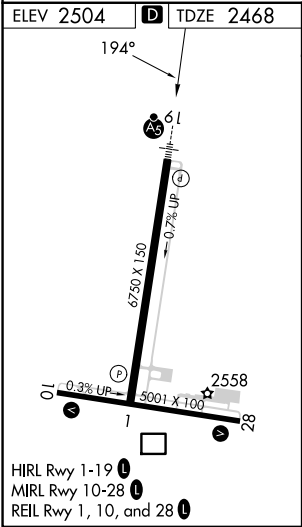
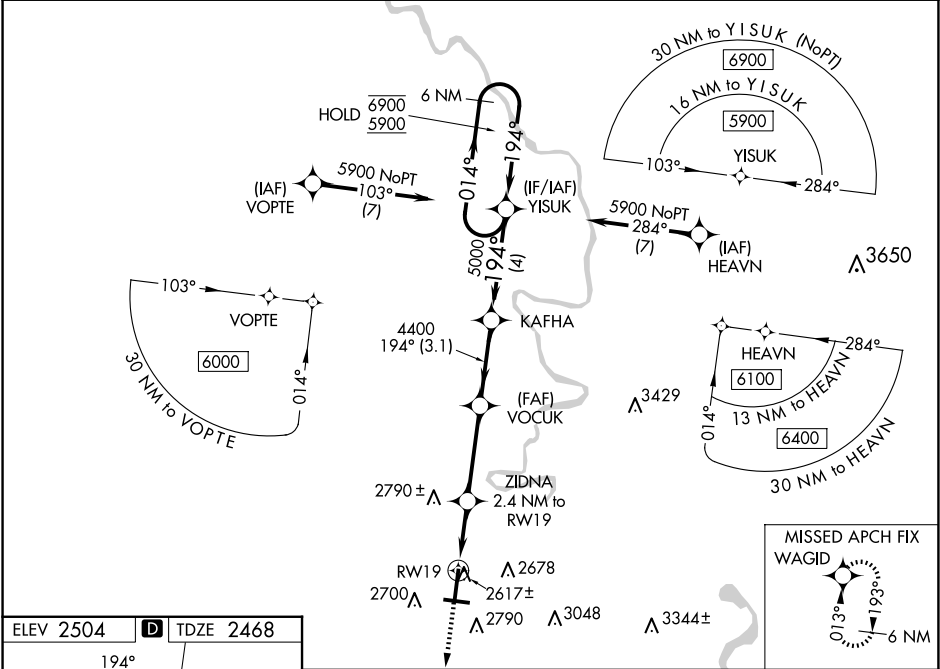





WAAS CH 63011 W19A	APP CRS 194°	Rwy Idg TDZE 6750 2468 Apt Elev 2504
--	------------------------	---

RNAV (GPS) RWY 19
RALEIGH COUNTY MEML (BKW)

RNP APCH - GPS.		MALSR	MISSED APPROACH: Climb to 5900 direct WAGID and hold, continue climb-in-hold to 5900.
<div>T A</div>	Baro-VNAV NA. For inop ALS, increase LNAV/VNAV all Cats visibilities to 1 SM, LNAV visibilities Cats C/D to 1½ SM.	<div>A5</div>	
ASOS 121.55	CHARLESTON APP CON 125.4 269.125	UNICOM 123.0 (CTAF) 0	



5900		WAGID		6 NM Holding Pattern	
					
		RW19		YISUK	
1.4 NM to RW19		2.4 NM to RW19		014° → 6900 ← 194° 5900	
3280		4400		5000	
1.4 NM		1.1 NM		3.5 NM	
3.1 NM		4 NM		GP 3.00° TCH 55	
CATEGORY		A		B	
LPV DA		2688-½		220 (200- ½)	
LNAV/VNAV DA		2818-⅝		350 (400-⅝)	
LNAV MDA		2940-½ 472 (500-½)		2940-1 472 (500-1)	
CIRCLING		3120-1 616 (700-1)		3500-3 996 (1000-3)	