

WAAS
CH **82023**
W10A

APP CRS
103°

Rwy Idg
TDZE
Apt Elev
5001
2502
2504

RNAV (GPS) RWY 10

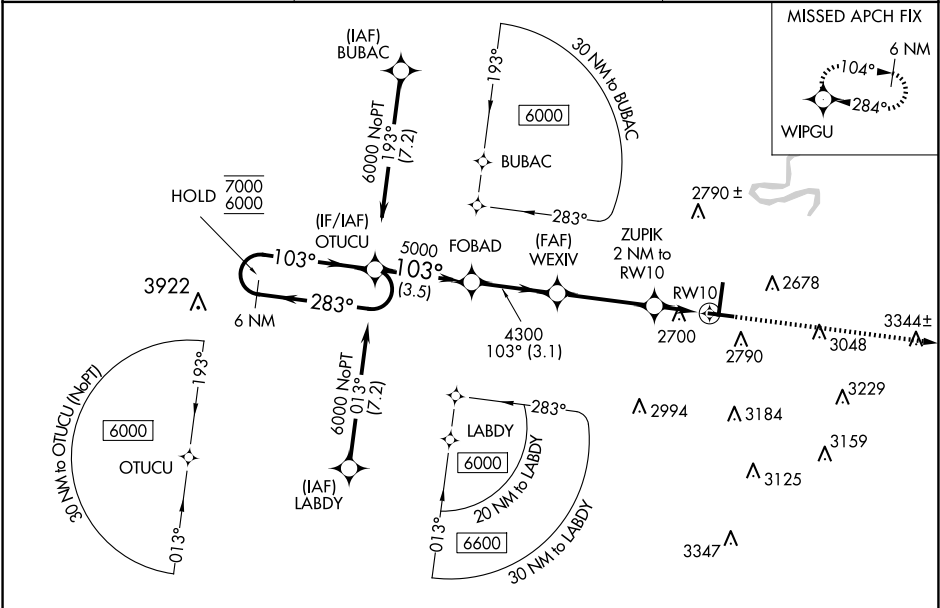
RALEIGH COUNTY MEML (BKW)

RNP APCH - GPS.

For uncompensated Baro-VNAV systems, LNAV/VNAV NA below -14°C or above 54°C.

MISSED APPROACH: Climb to 6300 direct WIPGU and hold, continue climb-in-hold to 6300.

ASOS 121.55	CHARLESTON APP CON 125.4 269.125	UNICOM 123.0 (CTAF) 0
-----------------------	--	---------------------------------



ELEV 2504

D

TDZE 2502

6 NM Holding Pattern

OTUCU

FOBAD

WEXIV

ZUPIK 2 NM to RWY 10

1.3 NM to RWY 10

6300 WIPGU

GP 3.00° TCH 59

7000 6000

283° 103°

5000 4300 3180

3.5 NM 3.1 NM 3.5 NM 0.7 NM 1.3 NM

CATEGORY	A	B	C	D
LPV DA		2702-3/4	200 (200-3/4)	
LNAV/VNAV DA		3016-13/8	514 (600-13/8)	
LNAV MDA	2960-1	458 (500-1)	2960-13/8	458 (500-13/8)
C CIRCLING	3120-1 616 (700-1)	3180-1 676 (700-1)	3320-2 1/2 816 (900-2 1/2)	3500-3 996 (1000-3)

6 NM Holding Pattern

OTUCU

FOBAD

WEXIV

ZUPIK 2 NM to RWY 10

1.3 NM to RWY 10

6300 WIPGU

GP 3.00° TCH 59

7000 6000

283° 103°

5000 4300 3180

3.5 NM 3.1 NM 3.5 NM 0.7 NM 1.3 NM

6300 WIPGU

103°

6750 X 150

0.3% UP

0.7% UP

2558

5001 X 100

1

28

HIRL Rwy 1-19

MIRL Rwy 10-28

REIL Rwy 1, 10, and 28