

APP CRS	Rwy Idg	4743
064°	TDZE	2850
	Apt Elev	2857

RNAV (GPS) RWY 5

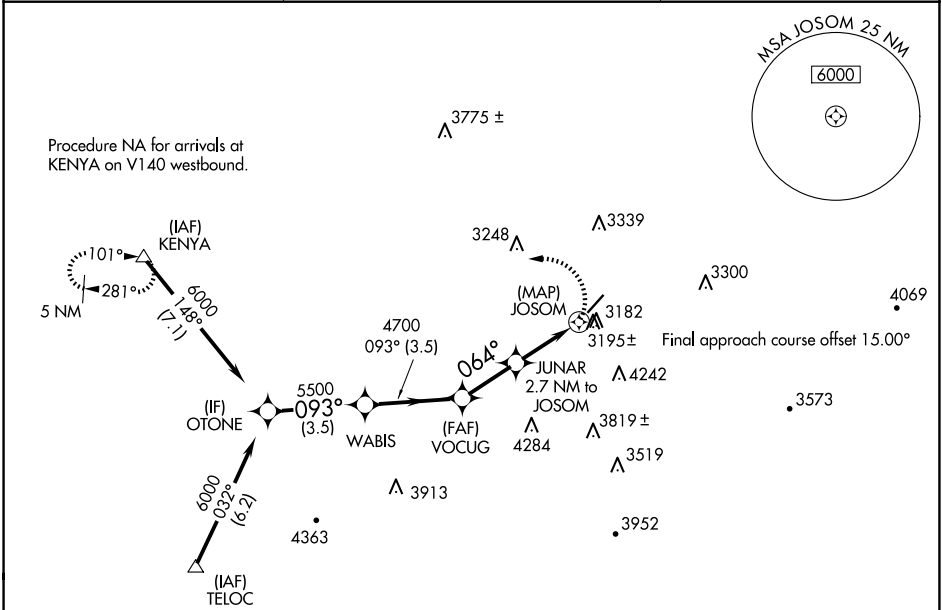
MERCER COUNTY (BLF')

RNP APCH.

Procedure NA at night.  
Rwy 5 helicopter visibility reduction below 1 SM NA.

MISSED APPROACH: Climbing left turn to 6000 direct KENYA and hold.

ASOS 132.725	INDIANAPOLIS CENTER 126.575 257.85	CTAF 122.9
-----------------	---------------------------------------	---------------



ELEV 2857 D TDZE 2850

HIRL Rwy 5-23  
REIL Rws 5 and 23

OTONE	WABIS	VOCUG	JUNAR 2.7 NM to JOSOM	JOSOM
6000	5500	4700	3940	
VGSI and descent angles not coincident (VGSI Angle 3.00/TCH 40).				
6000 KENYA				
093° 064° 3.10° TCH 45				
3.5 NM 3.5 NM 2.3 NM 2.7 NM 0.5				
CATEGORY	A	B	C	D
LNAV MDA	3560-1	710 (800-1)	3560-2	3560-2¼
			710 (800-2)	710 (800-2¼)