

WAAS CH 50207 W23A	APP CRS 229°	Rwy Idg 4743 TDZE 2856 Apt Elev 2857
--	------------------------	---

RNAV (GPS) RWY 23
MERCER COUNTY (BLF)

RNP APCH.

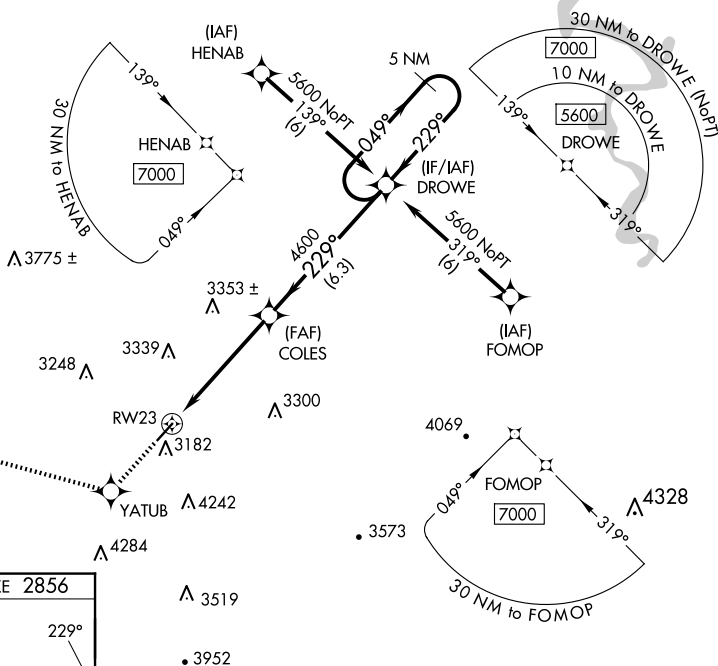
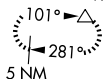
- A** VDP NA when using Beckley altimeter setting. When local altimeter setting not received, use Beckley altimeter setting and increase all DA 443 feet and all MDA 460 feet; increase LPV all Cats visibility to 2½ miles, LNAV Cat A visibility to 1¼ miles, Cat B to 1½ miles and Cat C and D to 3 miles.

MISSED APPROACH: Climb to 6000 direct YATUB and via track 292° to KENYA and hold.

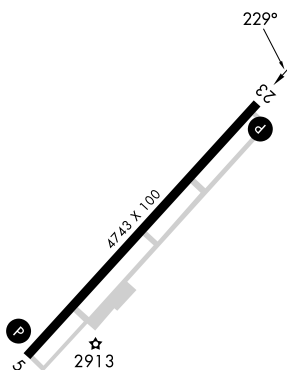
ASOS 132.725	INDIANAPOLIS CENTER 126.575 257.85	CTAF 122.9 0
------------------------	--	------------------------

MISSED APCH FIX

KENYA



ELEV 2857	D	TDZE 2856
-----------	----------	-----------



6000 ↑	YATUB ✱	tr 292°	KENYA △	VGS1 and RNAV glidepath not coincident (VGS1 Angle 3.00/TCH 65).			
*LNAV only				COLES	DROWE	5 NM Holding Pattern	
				2.3 NM	2.9 NM	6.3 NM	
CATEGORY	A						B
LPV	DA	3156-1 300 (300-1)					
LNAV MDA	3640-1 784 (800-1)		3640-1¼ 784 (800-1¼)		3640-2¼ 784 (800-2¼)		3640-2½ 784 (800-2½)