

LOC/DME I- <b>LCI</b>	APP CRS	Rwy Idg	<b>5646</b>
<b>108.5</b>	<b>084°</b>	TDZE	<b>545</b>
Chan <b>22</b>		Apt Elev	<b>545</b>

ILS or LOC RWY 8

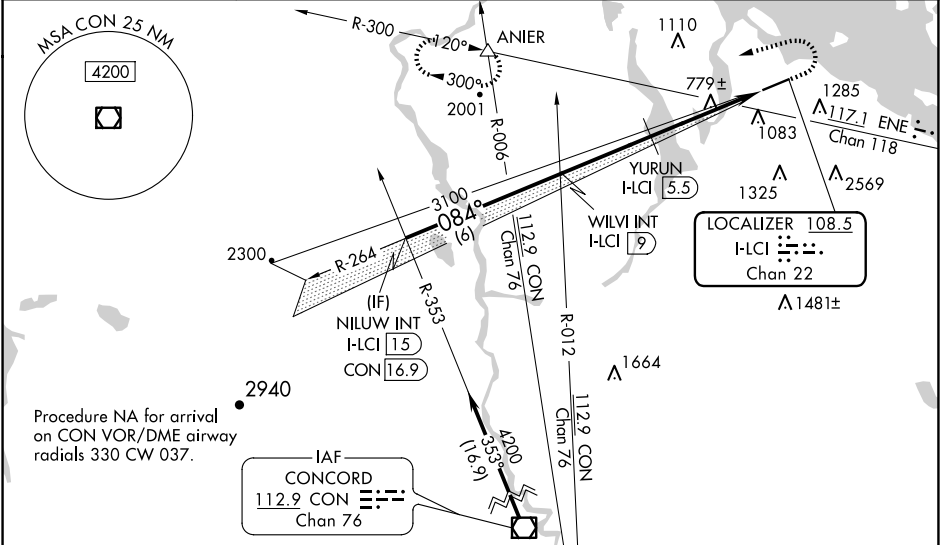
LACONIA MUNI (LCI)

**⚠** Circling NA south of Rwy 8-26. Circling Rwy 26 NA at night. For inop ALS, increase S-ILS 8 visibility all Cats 1/8 SM, YURUN fix minimums increase S-LOC 8 Cats C and D visibility 1/4 SM. When local altimeter setting not received, use Concord altimeter setting and increase S-ILS \* DA to 876 feet; increase S-ILS 8 DA to 983 feet and all visibilities 1/8 SM and increase all MDAs 100 feet, increase S-LOC 8 visibility Cat A 1/2 SM. Increase YURUN fix minimums visibility Cats C/D 1/4 SM and Circling visibility Cat C 1/4 SM. Inop table does not apply to S-LOC 8 Cats C and D.

**MALSR**

**MISSED APPROACH:** Climb to 1150 then climbing left turn to 5000 on heading 264° and ENE VOR/DME R-300 to ANIER INT and hold, continue climb-in-hold to 5000.  
\*Missed approach requires minimum climb of 295 feet per NM to 1500.

AWOS-3PT <b>133.525</b>	BOSTON APP CON <b>134.75 254.25</b>	CLNC DEL <b>119.85</b>	UNICOM <b>123.0 (CTAF) 0</b>
----------------------------	--	---------------------------	---------------------------------



NILUW INT I-LCI 15		WILVI INT I-LCI 9		1150 ↑	5000 hdg 264°	ENE R-300	ANIER △	ELEV 545	D	TDZE 545
4200		3100		YURUN I-LCI 5.5		I-LCI 2.5	I-LCI 1.1			
GS 3.00° TCH 44		3100		1980						
6 NM		3.5 NM		3 NM		1.4 NM				
CATEGORY		A		B		C				
S-ILS 8 *		795-½		250 (300-½)						
S-ILS 8		902-⅝		357 (400-⅝)						
S-LOC 8		1980-¾ 1435 (1500-¾)	1980-1 1435 (1500-1)	1980-3		1435 (1500-3)				
CIRCLING		1980-1¼ 1435 (1500-1¼)	1980-1½ 1435 (1500-1½)	1980-3		1435 (1500-3)				
YURUN FIX MINIMUMS										
S-LOC 8		1040-½	495 (500-½)	1040-1		495 (500-1)				
CIRCLING		1160-1	615 (700-1)	1160-1¾ 615 (700-1¾)		1460-3 915 (1000-3)				
								FAF to MAP 7.9 NM		
Knots		60	90	120	150	180				
Min:Sec		7:54	5:16	3:57	3:10	2:38				