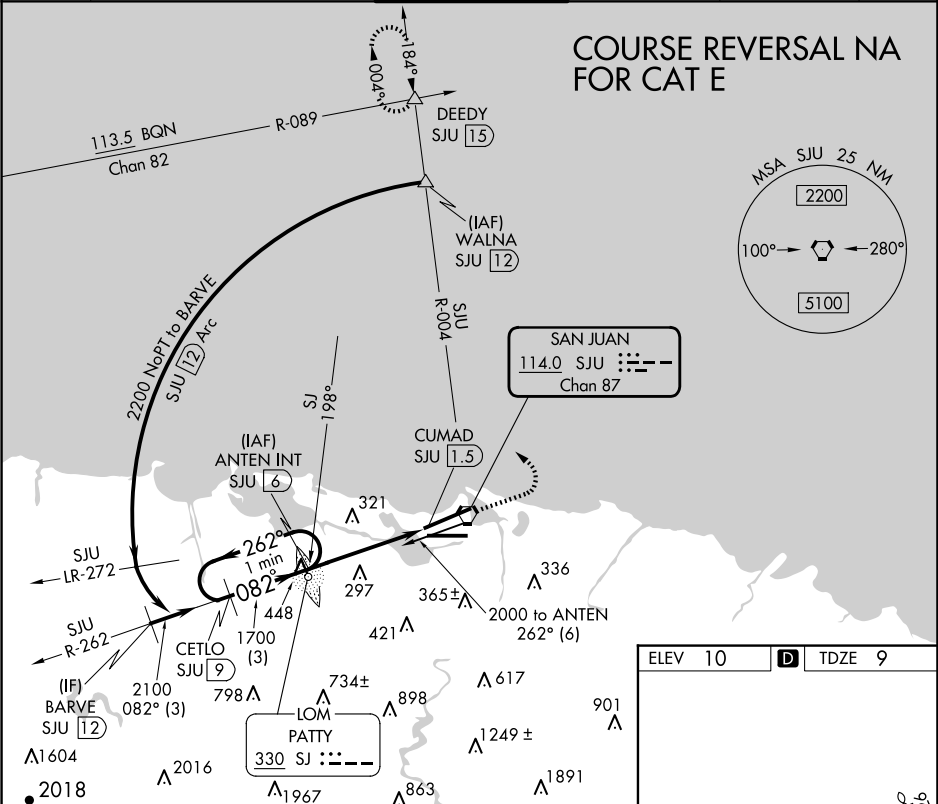


VORTAC SJU	APP CRS	Rwy Ldg	9384
114.0	082°	TDZE	9
Chan 87		Apt Elev	10

VOR or TACAN RWY 8

LUIS MUNOZ MARIN INTL (SJU)(TJSJ)

ADF or DME required.		MALSR	MISSED APPROACH: Climb to 2000 then climbing left turn to 3000 via heading 320° and SJU VORTAC R-004 outbound to DEEDY INT/SJU 15 DME and hold.	
▼ For inop ALS, increase S-8 Cat E visibility to 2 SM.	▲ Circling NA for Cat E south of Rwy 10-28.			
D-ATIS	SAN JUAN APP CON	SAN JUAN TOWER		GND CON
125.8	119.4 269.2 (WEST & SW) 120.9 290.2 (NORTH & EAST)	132.05 257.8		121.9 348.6
				CLNC DEL
				126.4 284.6
				CPDLC



One Minute Holding Pattern		ANTEN INT SJU 6		2000	3000	DEEDY
2000		262°		082°	hdg 320°	SJU R-004
VGSi and descent angles not coincident (VGSi Angle 3.00/TCH 70).		1700		082°	SJU 3	CUMAD SJU 1.5
		3.45°		TCH 46	3 NM	
				1.5		
CATEGORY	A	B	C	D	E	
S-8	560-½	551 (600-½)	560-1 551 (600-1)	560-1¼ 551 (600-1¼)	560-1½ 551 (600-1½)	
CIRCLING	600-1	590 (600-1)	740-2 730 (800-2)	920-3	910 (1000-3)	

