

VORTAC SJU	APP CRS	Rwy Ldg	9908
<u>114.0</u>		TDZE	7
Chan 87	249°	Apt Elev	10

VOR or TACAN RWY 26

LUIS MUNOZ MARIN INTL (SJU)(TJSJ)

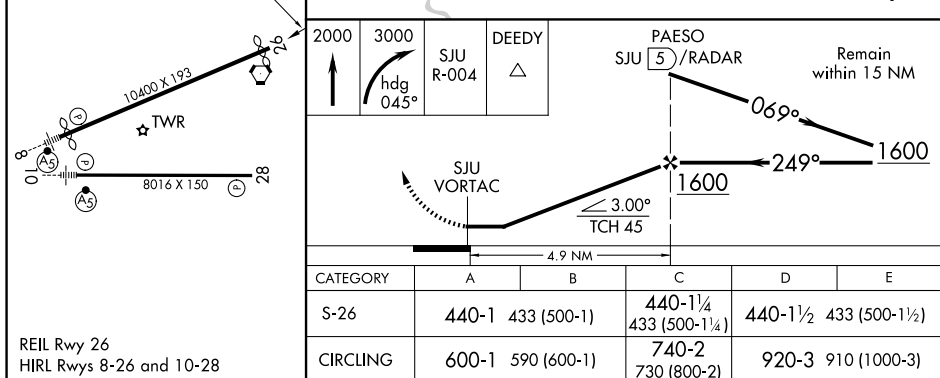
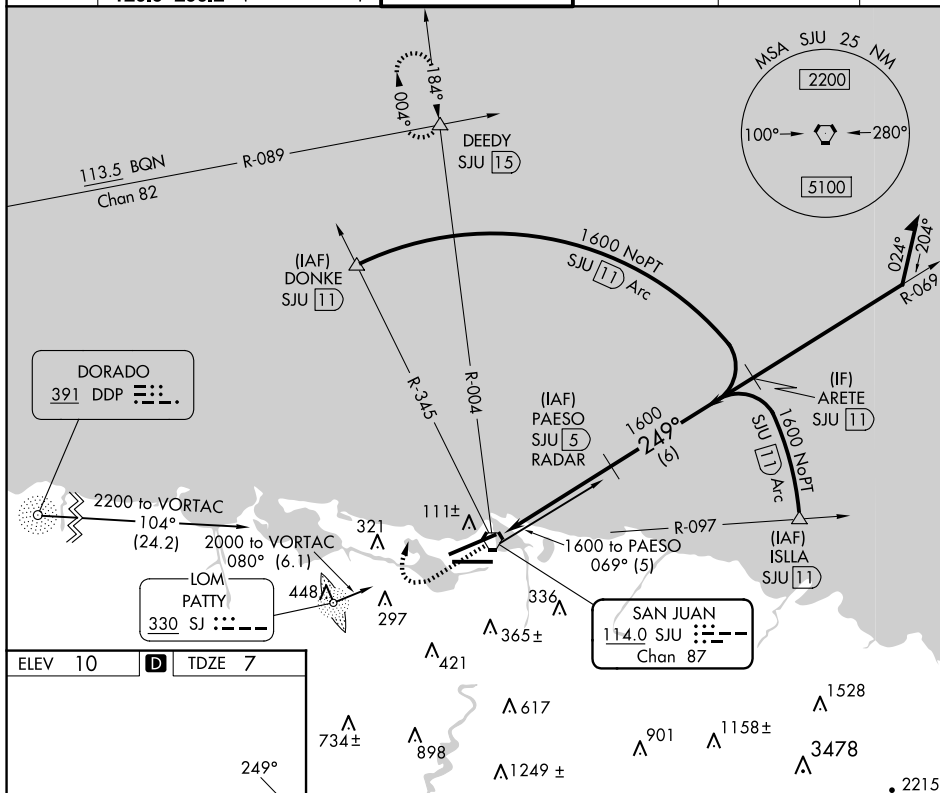
DME or RADAR required.

T Rwy 26 helicopter visibility reduction below $\frac{3}{4}$ SM NA.

A Circling NA for Cat E south of Rwy 10-28.

MISSED APPROACH: Climb to 2000 then climbing right turn to 3000 via heading 045° and SJU VORTAC R-004 to DEEDY INT/SJU 15 DME and hold.

D-ATIS	SAN JUAN APP CON		SAN JUAN TOWER		GND CON		CLNIC DEL		CPDLC
125.8	119.4	269.2 (WEST & SW)	132.05	257.8	121.9	348.6	126.4	284.6	



SAN JUAN, PUERTO RICO

Amdt 20A 06OCT22

LUIS MUNOZ MARIN INTL (SJU)(TJSJ)

VOR or TACAN RWY 26

18°26'N-66°00'W

SE-3, 07 AUG 2025 to 04 SEP 2025

SE-3, 07 AUG 2025 to 04 SEP 2025