

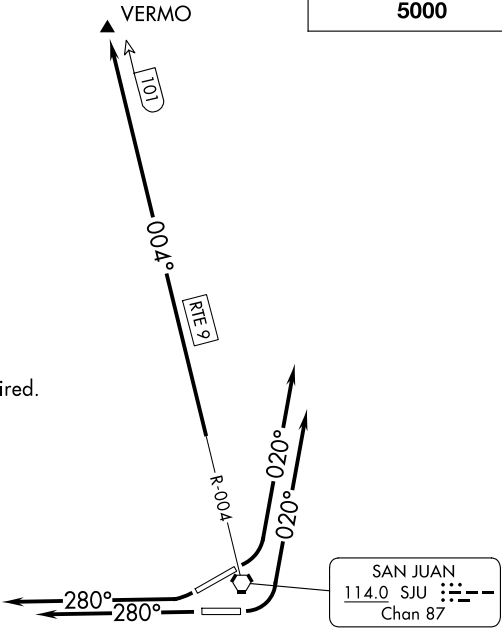
(VERMO6.VERMO) 24137
VERMO SIX DEPARTURE

LUIS MUNOZ MARIN INTL (SJU)(TJSJ)
AL-784 (FAA) SAN JUAN, PUERTO RICO

D-ATIS
125.8
SAN JUAN TOWER
132.05 257.8
GND CON
121.9 348.6
CLNC DEL
126.4 284.6
CPDLC
SAN JUAN DEP CON
119.4 269.2 (West & SW)
120.9 290.2 (North & East)

TOP ALTITUDE:
5000

NOTE: RADAR required.
NOTE: DME or GPS required.



TAKEOFF MINIMUMS
Rwys 8, 10, 26, 28: Standard.

NOTE: Chart not to scale.



DEPARTURE ROUTE DESCRIPTION

TAKEOFF RUNWAY 8: Climb on heading 020° or as assigned by ATC for vectors to intercept SJU VORTAC R-004 to VERMO/101 DME. Thence. . .
TAKEOFF RUNWAY 10: Climb on heading 020° or as assigned by ATC for vectors to intercept SJU VORTAC R-004 to VERMO/101 DME. Thence. . .
TAKEOFF RUNWAY 26: Climb on heading 280° or as assigned by ATC for vectors to intercept SJU VORTAC R-004 to VERMO/101 DME. Thence. . .
TAKEOFF RUNWAY 28: Climb on heading 280° or as assigned by ATC for vectors to intercept SJU VORTAC R-004 to VERMO/101 DME. Thence. . .

. . . maintain 5000 unless assigned lower altitude. Expect clearance to FL280, or requested altitude if lower, ten minutes after departure.