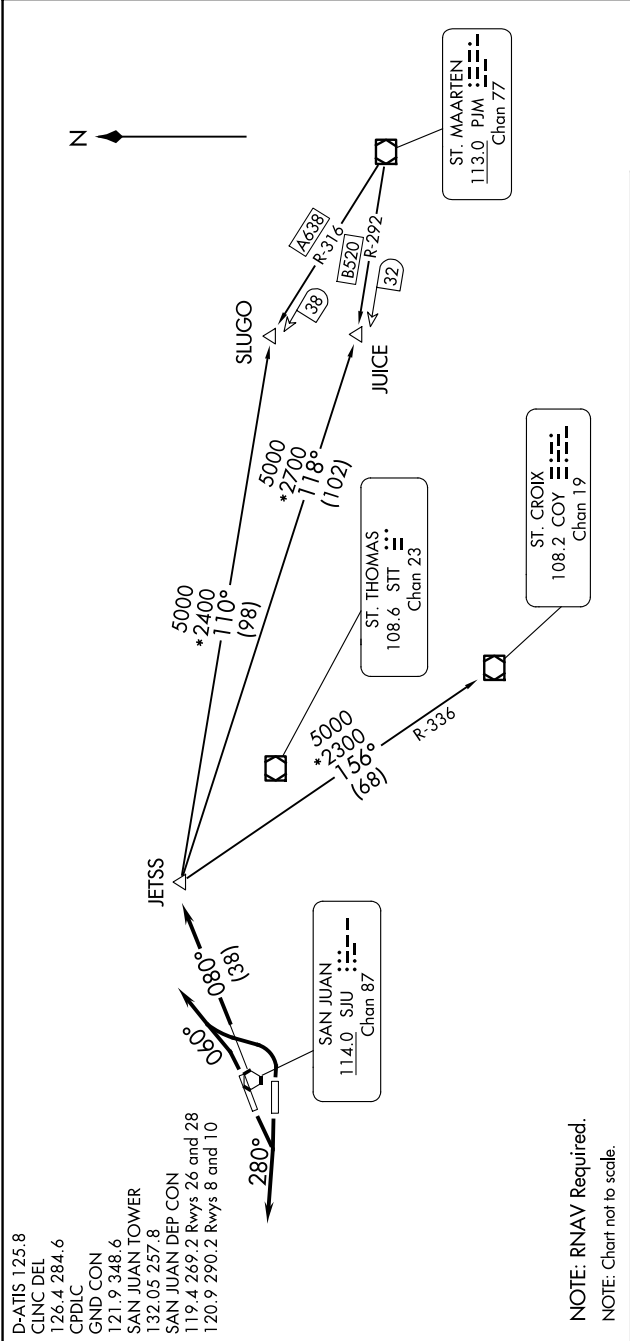


SE-3, 07 AUG 2025 to 04 SEP 2025



DEPARTURE ROUTE DESCRIPTION

TAKE-OFF RUNWAYS 8 AND 10: Turn left heading 060° for vector to intercept SJU R-080 to JETSS INT. Thence....
TAKE-OFF RUNWAYS 26 AND 28: Fly heading 280° for vector to intercept SJU R-080 to JETSS INT. Thence....
.....Maintain 5000' unless assigned lower altitude. Expect clearance to FL 280 or requested altitude, if lower, ten (10) minutes after departure.
JUICE TRANSITION (JETSS1.JUICE): From over JETSS INT direct to JUICE DME. Thence as filed.
SLUGO TRANSITION (JETSS1.SLUGO): From over JETSS INT direct to SLUGO DME. Thence as filed.
ST. CROIX TRANSITION (JETSS1.COY): From over JETSS INT direct to COY VOR/DME. Thence as filed.

SE-3, 07 AUG 2025 to 04 SEP 2025