

LOC I-SJU <u>110.3</u>	APP CRS 078°	Rwy Ldg 9384 TDZE 9 Apt Elev 10
----------------------------------	------------------------	--

ILS or LOC RWY 8
LUIS MUNOZ MARIN INTL (SJU)(TJSJ)

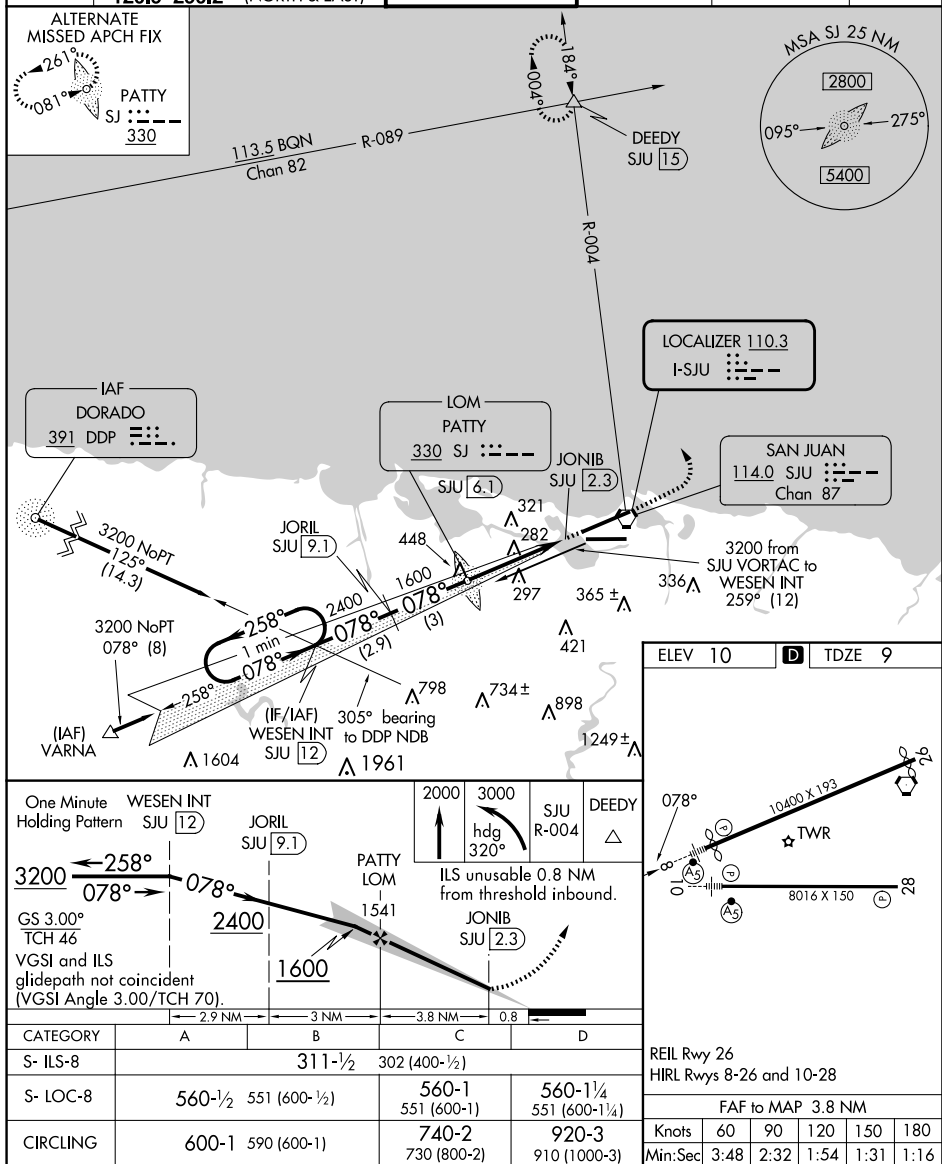
DME required.

T For inop ALS, increase S-ILS 8 all Cats visibility to
A 1 SM.

MALSR

MISSED APPROACH: Climb to 2000 then climbing left turn to 3000 on heading 320° and SJU VORTAC R-004 to DEEDY Int/SJU 15 DME and hold.

D-ATIS 125.8	SAN JUAN APP CON 119.4 269.2 (WEST & SW) 120.9 290.2 (NORTH & EAST)		SAN JUAN TOWER 132.05 257.8	GND CON 121.9 348.6	CLNC DEL 126.4 284.6	CPDLC
-----------------	---	--	--------------------------------	------------------------	-------------------------	-------



SAN JUAN, PUERTO RICO

Amdt 16A 06OCT22

LUIS MUNOZ MARIN INTL (S.II)(T.I.S.I)

ILS or LOC RWY 8

SE-3, 07 AUG 2025 to 04 SEP 2025

SE-3, 07 AUG 2025 to 04 SEP 2025