

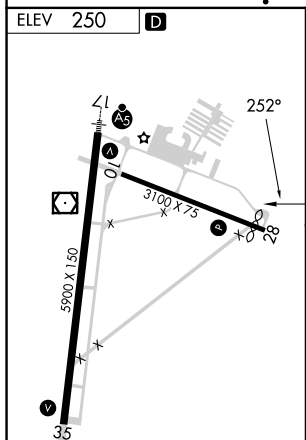
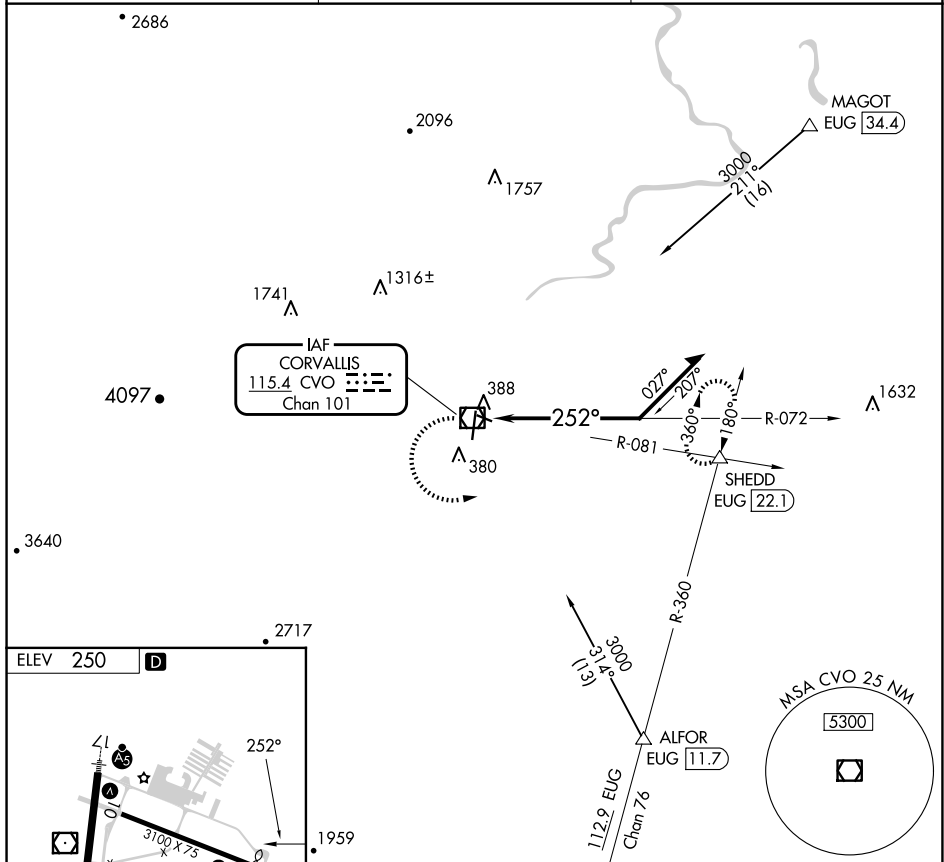
24081

VOR-A
CORVALLIS MUNI (CVO)




When local altimeter setting not received, procedure NA.
Circling Rwy 28 NA at night.

MISSED APPROACH: Climbing left turn to 3000 on CVO VOR/DME R-081 to SHEDD INT/EUG 22.1 DME and hold, continue climb-in-hold to 3000.

AWOS-3PT 135.775	CASCADE APP CON* 127.5 348.7	UNICOM 123.075 (CTAF) ①
----------------------------	--	-----------------------------------



HIRL 17-35 **L**
MIRL Rwy 10-28 **L**
REIL Rwy 35 **L**

<div style="display: flex; align-items: center;"> <div style="text-align: center; margin-right: 10px;"> 3000  CVO R-081 </div> <div style="border: 1px solid black; padding: 5px; text-align: center;"> SHEDD  </div> </div>		<div style="text-align: center;"> CVO VOR/DME  </div>		
CATEGORY	A	B	C	D
CIRCLING 1400-1¼ 1150 (1200-1¼)	1400-1½ 1150 (1200-1½)	1400-3 1150 (1200-3)		

CORVALLIS MUNI (CVO)
VOR-A

NW-1, 07 AUG 2025 to 04 SEP 2025