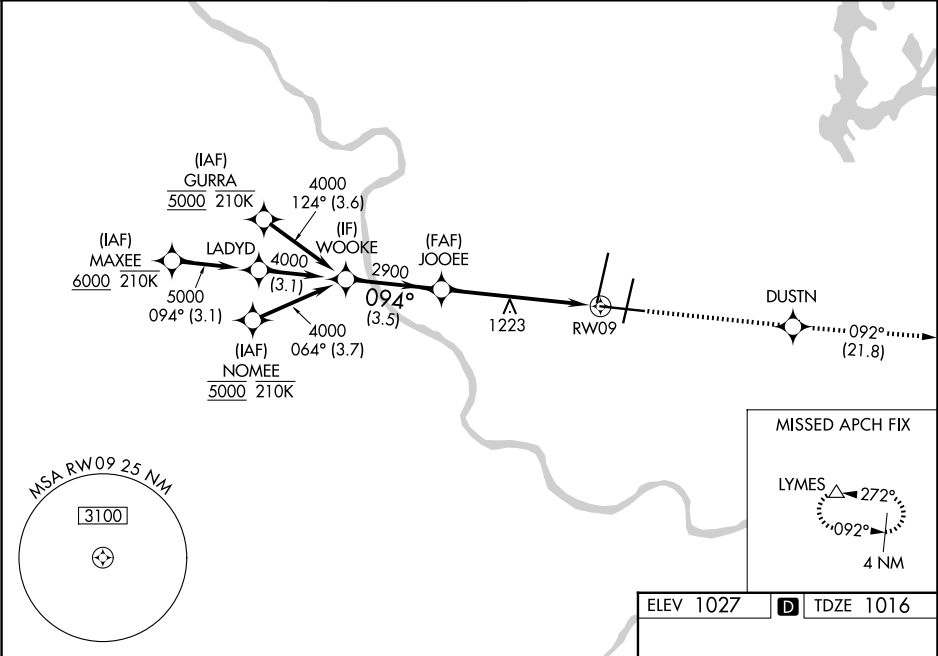


WAAS CH 56608 W09A	APP CRS 094°	Rwy Ldg TDZE 1016 Apt Elev 1027
--	------------------------	---

RNAV (GPS) Y RWY 9

KANSAS CITY INTL (MCI)

RNP APCH - GPS. ▼ For uncompensated Baro-VNAV systems, LNAV/VNAV NA below -19°C or above 54°C. For inop ALS, increase LPV all Cats and LNAV/VNAV all Cats visibility to RVR 4500, and increase LNAV Cats C/D visibility to 1½ SM.		MALSR 	MISSED APPROACH: Climb to 4000 direct DUSTN and on track 092° to LYMES and hold.		
D-ATIS 128.375	KANSAS CITY APP CON 120.95 318.1	INTERNATIONAL TOWER 128.2 254.25	GND CON 121.8	CLNC DEL 135.7	CPDLC



WOOKE		4000	DUSTN	tr 092°	LYMES
JOOEE		2900			
GP 3.00°					
TCH 56					
3.5 NM		4.5 NM	1.3 NM		
CATEGORY	A	B	C	D	
LPV DA	1316/40		300 (300-¾)		
LNAV/VNAV DA	1319/40		303 (300-¾)		
LNAV MDA	1480/24	464 (500-½)	1480/50	464 (500-1)	
CIRCLING	1540-1	513 (600-1)	1540-1½	1580-2	
			513 (600-1½)	553 (600-2)	
KANSAS CITY, MISSOURI		KANSAS CITY INTL (MCI)		HIRL all Rwy's	
Amdt 4 29DEC22		39°18'N-94°43'W		TDZ/CL Rwy's 1L, 1R, 19R and 19L	

RNAV (GPS) Y RWY 9