
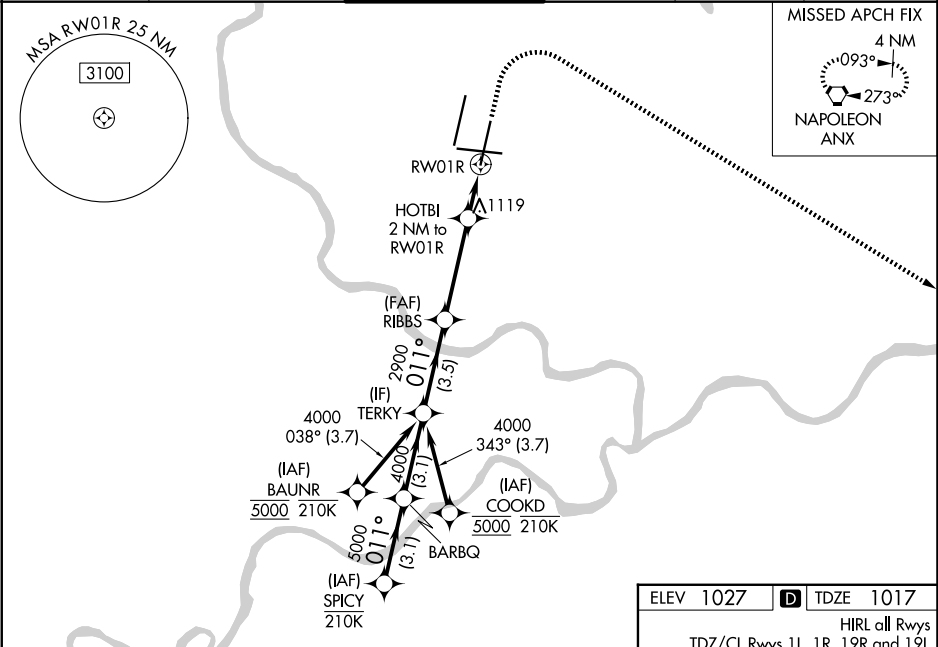


WAAS CH 58208 W01A	APP CRS 011°	Rwy Ldg TDZE Apt Elev 9500 1017 1027
--	------------------------	--

RNAV (GPS) Y RWY 1R

KANSAS CITY INTL (MCI)

RNP APCH - GPS.			ALSF-2 	MISSED APPROACH: Climb to 1500 then climbing right turn to 4000 direct ANX VORTAC and hold.	
▼ LNAV procedure NA during simultaneous operations. Use of FD or AP required during simultaneous operations. For uncompensated Baro-VNAV systems, LNAV/VNAV NA below -19°C or above 54°C. Simultaneous approach authorized except from BAUNR or COOKD. For inop ALS, increase LNAV/VNAV all Cats visibility to RVR 4500 and LNAV Cats C/D visibility to RVR 5500.					
D-ATIS 128.375	KANSAS CITY APP CON 120.95 318.1	INTERNATIONAL TOWER 128.2 254.25	GND CON 121.8	CLNC DEL 135.7	CPDLC



SPICY		VGSI and RNAV glidepath not coincident (VGSI Angle 3.00/TCH 74).		1500	4000	ANX
6000		011°		5000		
BARBQ		TERKY		RIBBS		
GP 3.00°		2900		HOTBI		
TCH 59		1700		RWY 1R		
3.1 NM		3.1 NM		3.5 NM		
CATEGORY		A		B		
LPV DA		1217/18		200 (200-½)		
LNAV/ VNAV DA		1311/24		294 (300-½)		
LNAV MDA		1380/24		363 (400-½)		
CIRCLING		1540-1		513 (600-1)		

