

WAAS CH 42808 W01B	APP CRS 011°	Rwy Ldg 10801 TDZE 1014 Apt Elev 1027
--	------------------------	--

RNAV (GPS) Y RWY 1L
KANSAS CITY INTL (MCI)

RNP APCH - GPS.

T Use of FD or AP required during simultaneous operations. LNAV procedure NA during simultaneous operations. For uncompensated Baro-VNAV systems, LNAV/VNAV NA below -19°C or above 54°C. For inop ALS, increase LNAV/VNAV all Cats visibility to RVR 4500 and LNAV Cats C/D visibility to RVR 5500. Simultaneous approach authorized except from GAYLZ and JERLD.

MALSR



MISSED APPROACH: Climb to 2000 then climbing left turn to 4000 direct BOWLR and hold.

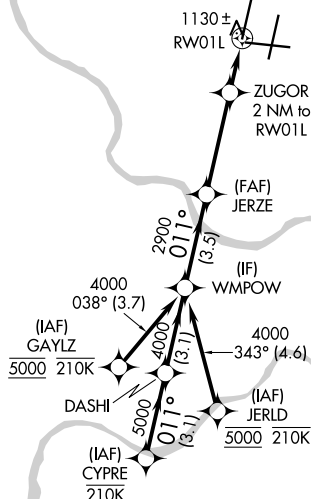
D-ATIS 128.375	KANSAS CITY APP CON 120.95 318.1	INTERNATIONAL TOWER 128.2 254.25	GND CON 121.8	CLNC DEL 135.7	CPDLC
--------------------------	--	--	-------------------------	--------------------------	-------

MISSED APCH FIX



MSA RW01L 25 NM

3100



NC-3, 07 AUG 2025 to 04 SEP 2025

<p>Diagram illustrating the glidepath for a glider approach. The glidepath starts at 6000 ft, descends to 5000 ft, then to 4000 ft, then to 2900 ft, then to 1700 ft, and finally to 0 ft. The glidepath is labeled "GP 3.00° TCH 57°". The glidepath is also labeled "VGS1 and RNAV glidepath not coincident (VGS1 Angle 3.00/TCH 78)". The glidepath is labeled "CYPRE", "DASHI", "WMP0W", "JERZE", "ZUGOR", "RW01L", and "BOWLRL". The glidepath is labeled "2000", "4000", and "6000". The glidepath is labeled "3.1 NM", "3.1 NM", "3.5 NM", "3.7 NM", "1.1 NM", and "0.9 NM". The glidepath is labeled "0.9 NM to RW01L" and "0.9 NM to RW01L".</p>		<p>Diagram illustrating the glidepath for a glider approach. The glidepath starts at 6000 ft, descends to 5000 ft, then to 4000 ft, then to 2900 ft, then to 1700 ft, and finally to 0 ft. The glidepath is labeled "GP 3.00° TCH 57°". The glidepath is also labeled "VGS1 and RNAV glidepath not coincident (VGS1 Angle 3.00/TCH 78)". The glidepath is labeled "CYPRE", "DASHI", "WMP0W", "JERZE", "ZUGOR", "RW01L", and "BOWLRL". The glidepath is labeled "2000", "4000", and "6000". The glidepath is labeled "3.1 NM", "3.1 NM", "3.5 NM", "3.7 NM", "1.1 NM", and "0.9 NM". The glidepath is labeled "0.9 NM to RW01L" and "0.9 NM to RW01L".</p>		
CATEGORY	A	B	C	D
LPV DA	1214/18 200 (200-½)			
RNAV/ VNAV DA	1328/24 314 (400-½)			
RNAV MDA	1380/24 366 (400-½)	1380/35 366 (400-¾)		
CIRCLING	1540-1 513 (600-1)	1540-1½ 513 (600-1½)	1580-2 553 (600-2)	

