

WAAS CH 82108 W19A	APP CRS 191°	Rwy Ldg 9500 TDZE 995 Apt Elev 1027
--	------------------------	--

RNAV (GPS) Y RWY 19L

KANSAS CITY INTL (MCI)

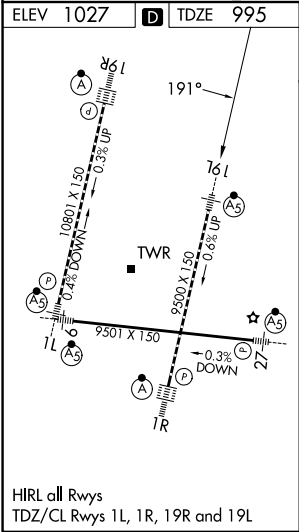
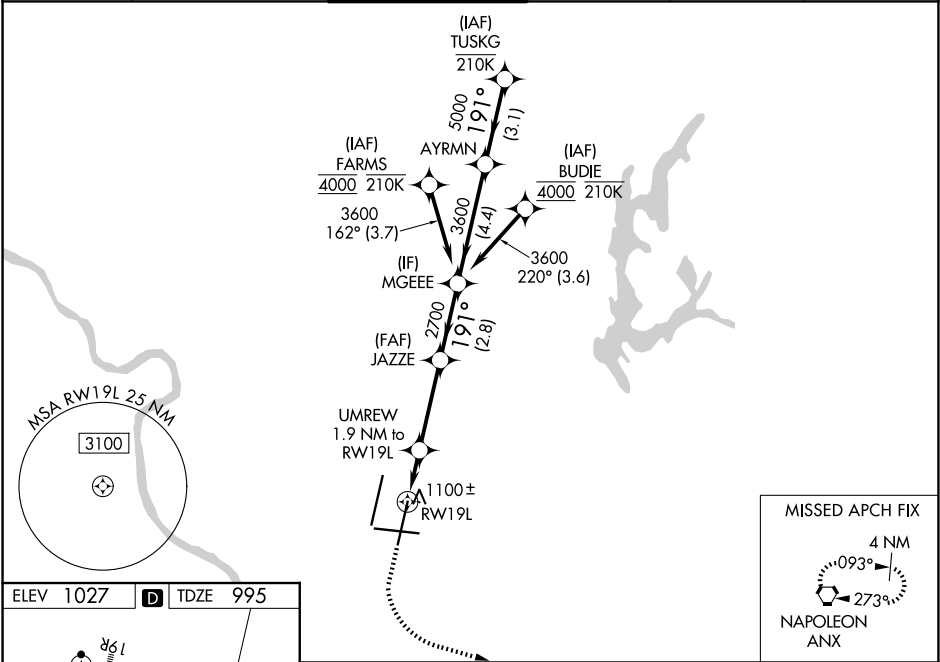
RNP APCH - GPS.

▼ Use of FD or AP required during simultaneous operations. LNAV procedure NA during simultaneous operations. For uncompensated Baro-VNAV systems, LNAV/VNAV NA below -21°C or above 54°C. For inop ALS, increase LNAV/VNAV all Cats and LNAV Cats C/D visibility to RVR 5500. Simultaneous approach authorized except from BUDIE and FARMS.

MALSR

MISSED APPROACH: Climb to 1500 then climbing left turn to 4000 direct ANX VORTAC and hold.

D-ATIS 128.375	KANSAS CITY APP CON 120.95 318.1	INTERNATIONAL TOWER 128.2 254.25	GND CON 121.8	CLNC DEL 135.7	CPDLC
--------------------------	--	--	-------------------------	--------------------------	-------



1500 ↑		4000 ↙		ANX 			
		UMREW 1.9 NM to RW19L		JAZZE 2700		MGEEE	
				3600		AYRMN	
				2700		TUSKG	
		1640				191° 5000 6000	
		1 NM		0.9 NM		3.3 NM	
				2.8 NM		4.4 NM	
						3.1 NM	
						GP 3.00° TCH 59	
CATEGORY		A		B		C	
D							
LPV DA		1195/18		200 (200-½)			
LNAV/VNAV DA		1365/35		370 (400-⅝)			
LNAV MDA		1360/24 365 (400-½)		1360/35 365 (400-⅝)			
CIRCLING		1540-1 513 (600-1)		1540-1½ 513 (600-1½)		1580-2 553 (600-2)	