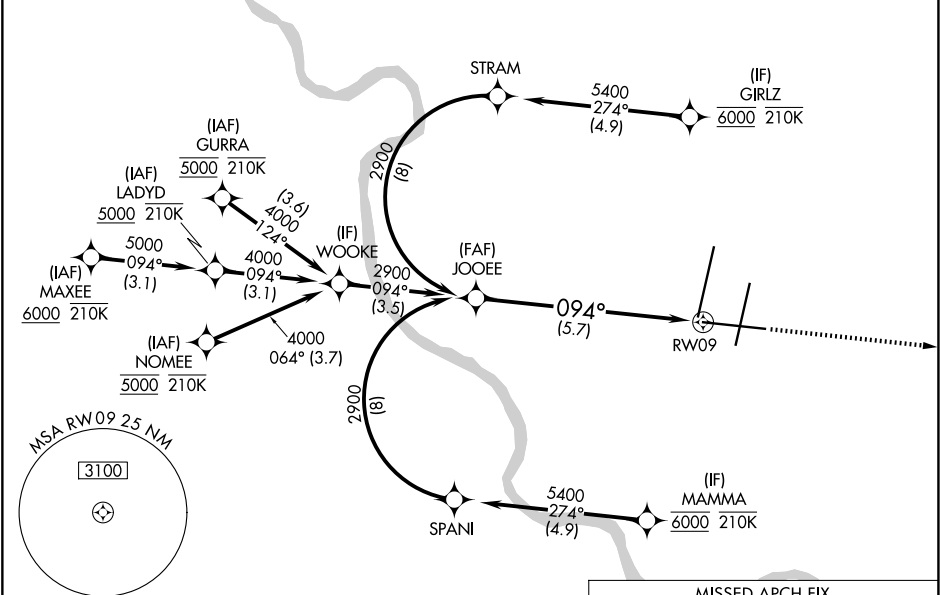


APP CRS	Rwy Ldg	9501
094°	TDZE	1016
	Apt Elev	1027

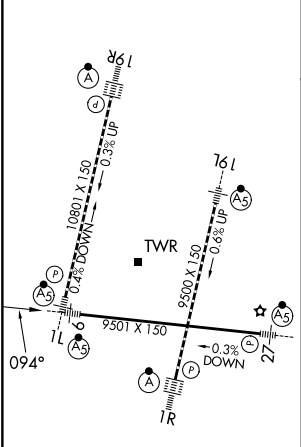
RNAV (RNP) Z RWY 9  
KANSAS CITY INTL (MCI)

RNP AR APCH - GPS.	MALSR	MISSED APPROACH: Climb to 4000 direct DUSTN and on track 092° LYMES and hold.
For uncompensated Baro-VNAV systems, procedure NA below -19°C or above 54°C. For inop ALS, increase RNP 0.20 all Cats visibility to RVR 4500; increase RNP 0.30 all Cats visibility to RVR 6000.		

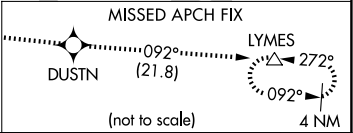
D-ATIS 128.375	KANSAS CITY APP CON 120.95 318.1	INTERNATIONAL TOWER 128.2 254.25	GND CON 121.8	CLNC DEL 135.7	CPDLC
-------------------	-------------------------------------	-------------------------------------	------------------	-------------------	-------



ELEV 1027	D	TDZE 1016
-----------	---	-----------



HIRL all Rwys  
TDZ/CL Rwys 1L, 1R, 19R and 19L



JOOEE	2900	4000	DUSTN	tr 092°	LYMES
2900	094°				
GP 3.00°					
TCH 56					
5.7 NM					
RW09					
See planview for multiple IF locations.					
CATEGORY	A	B	C	D	
RNP 0.20 DA	1319/24	303 (300-½)			
RNP 0.30 DA	1418/40	402 (400-¾)			

AUTHORIZATION REQUIRED

NC-3, 07 AUG 2025 to 04 SEP 2025

NC-3, 07 AUG 2025 to 04 SEP 2025