



APP CRS 011°	Rwy Ldg TDZE Apt Elev	9500 1017 1027
------------------------	-----------------------------	---

RNAV (RNP) Z RWY 1R
KANSAS CITY INTL (MCI)

RNP AR APCH - GPS.		ALSF-2 	MISSED APPROACH: Climb to 1500 then climbing right turn to 4000 direct ANX VORTAC and hold.	
 Use of FD or AP required during simultaneous operations. For uncompensated Baro-VNAV systems, procedure NA below -19°C or above 54°C. Simultaneous approach authorized, except for arrivals at FIDVU, BRSKT, BAUNR and COOKD. For inop ALS, increase RNP 0.30 all Cats visibility to RVR 4500.				
D-ATIS 128.375	KANSAS CITY APP CON 120.95 318.1	INTERNATIONAL TOWER 128.2 254.25	GND CON 121.8	CLNC DEL 135.7
CPDLC				

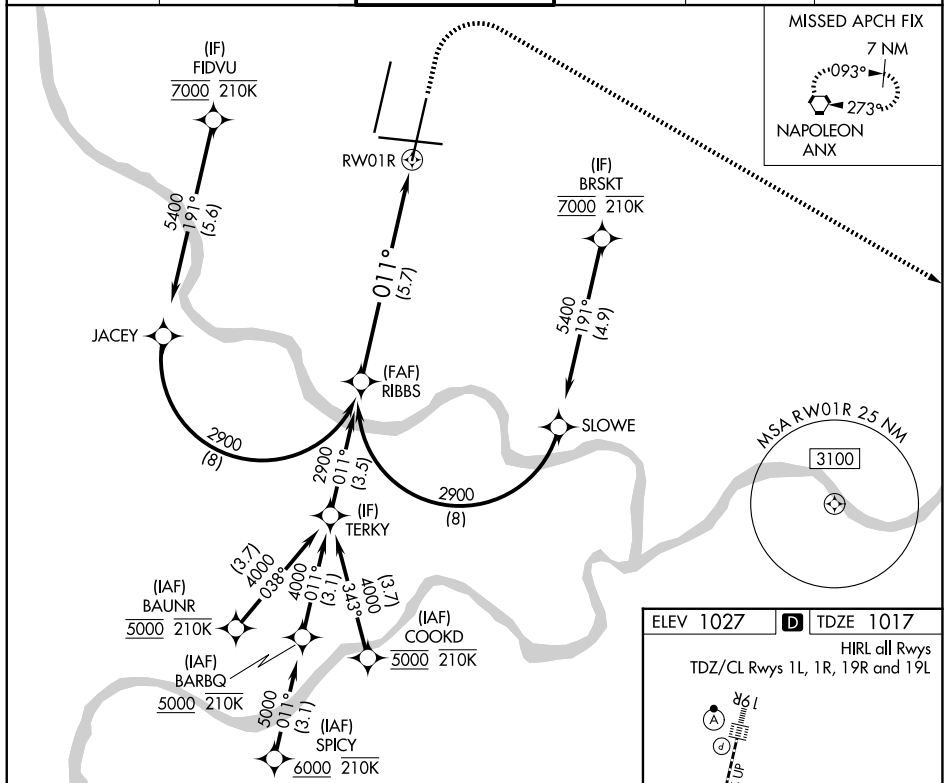


Figure 1-1 illustrates a VORTAC station with a VGSB and RNAV glidepath that are not coincident. The VGSB is at 2900 feet, and the RNAV glidepath is at 011 degrees. The distance between the station and the glidepath is 5.7 NM. The glidepath is labeled RW01R. The diagram also shows a table with categories A, B, C, and D, and a note 'RNP 0.30 DA'.

CATEGORY	A	B	C	D
RNP 0.30 DA	1280/24		263 (300-1/2)	

AUTHORIZATION REQUIRED

