

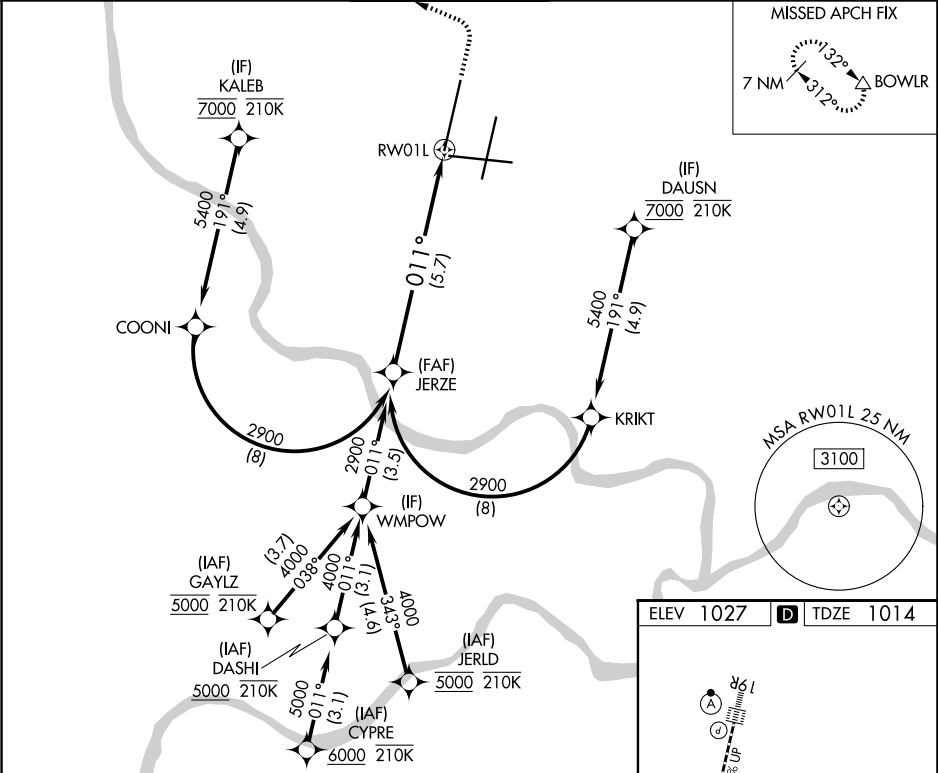
APP CRS	Rwy Ldg	10801
011°	TDZE	1014
	Apt Elev	1027

RNAV (RNP) Z RWY 1L

KANSAS CITY INTL (MCI)

RNP AR APCH - GPS.	MALSR	MISSED APPROACH: Climb to 2000 then climbing left turn to 4000 direct BOWLR and hold.
Use of FD or AP required during simultaneous operations. For uncompensated Baro-VNAV systems, procedure NA below -19°C or above 54°C. For inop ALS, increase RNP 0.10 all Cats visibility to RVR 4000 and RNP 0.30 all Cats visibility to RVR 6000. Simultaneous approach authorized, except for arrivals at KALEB, DAUSN, GAYLZ and JERLD.		

D-ATIS	KANSAS CITY APP CON	INTERNATIONAL TOWER	GND CON	CLNC DEL	CPDLC
128.375	120.95 318.1	128.2 254.25	121.8	135.7	



JERZE				VGSi and RNAV glidepath not coincident (VGSi Angle 3.00/TCH 78).		2000	4000	BOWL R
2900				011°		RW01L		
GP 3.00° TCH 57				See planview for multiple IF locations.				
				5.7 NM				
CATEGORY	A		B		C		D	
RNP 0.10 DA			1264/24		250 (300-½)			
RNP 0.30 DA			1418/40		404 (400-¾)			
AUTHORIZATION REQUIRED								

