

RACER EIGHT DEPARTURE

AL-780 (FAA)

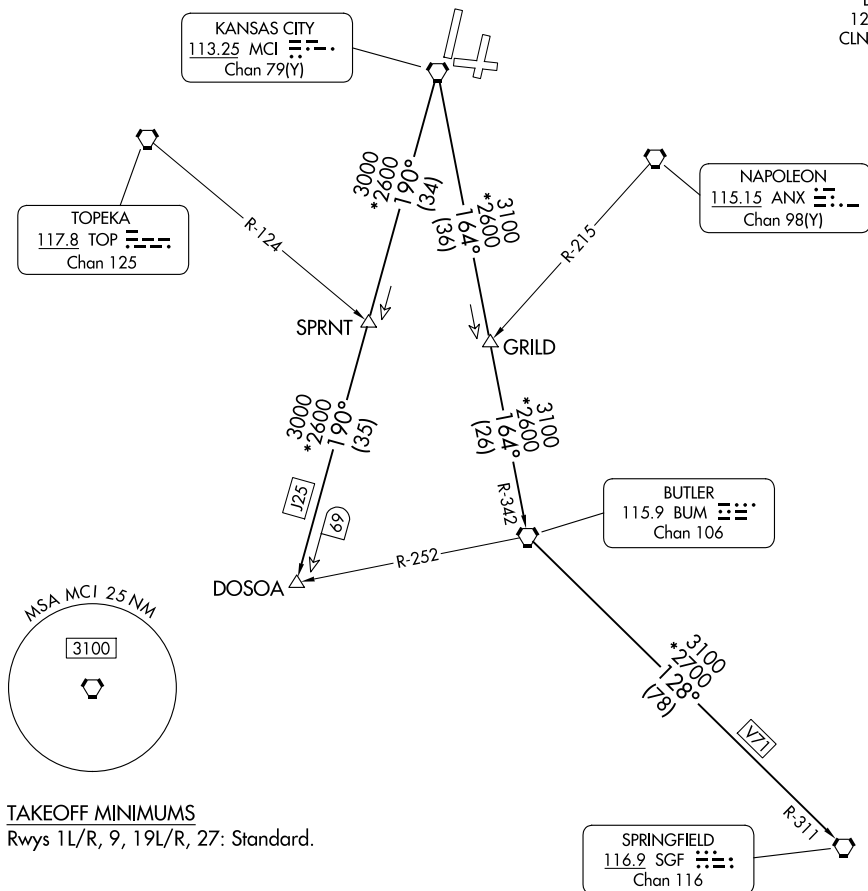
KANSAS CITY INTL (MCI)

KANSAS CITY, MISSOURI

RADAR required.

TOP ALTITUDE:
10000

KANSAS CITY DEP CON
123.95 318.1 (BUTLER/SPRINGFIELD TRANSITION)
124.7 284.7 (DOSOA TRANSITION)
D-ATIS
128.375
CLNC DEL
135.7



TAKEOFF MINIMUMS

Rwys 1L/R, 9, 19L/R, 27: Standard.

NOTE: Chart not to scale.

DEPARTURE ROUTE DESCRIPTION

TAKEOFF ALL RUNWAYS: Climb on assigned heading for RADAR vectors to appropriate route. Maintain 10000 or as assigned by ATC, expect filed altitude 10 minutes after departure.

BUTLER TRANSITION (RACER8.BUM): From over MCI VORTAC on MCI R-164 and BUM R-342 to BUM VORTAC.

DOSOA TRANSITION (RACER8.DOSOA): From over MCI VORTAC on MCI R-190 to DOSOA.

SPRINGFIELD TRANSITION (RACER8.SGF): From over MCI VORTAC on MCI R-164 and BUM R-342 to BUM VORTAC, then on BUM R-128 and SGF R-311 to SGF VORTAC.

RACER EIGHT DEPARTURE

(RACER8.MCI) 05OCT23

KANSAS CITY, MISSOURI

KANSAS CITY INTL (MCI)