

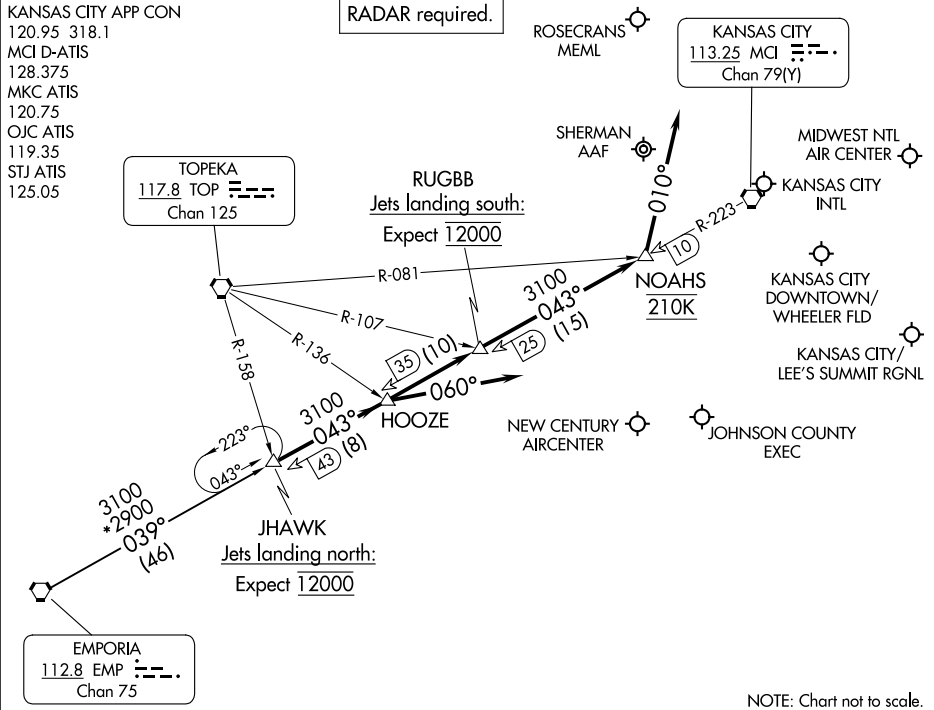
NC-3, 07 AUG 2025 to 04 SEP 2025

(JHAWK.JHAWK8) 25107

JHAWK EIGHT ARRIVAL

AL-780 (FAA)

KANSAS CITY, MISSOURI



ARRIVAL ROUTE DESCRIPTION

EMPORIA TRANSITION (EMP.JHAWK8): From over EMP VORTAC on EMP R-039 and MCI R-223 to JHAWK. Thence. . .

LANDING KANSAS CITY INTL (MCI):
RUNWAYS 19L/R: From over JHAWK on MCI R-223 to NOAHS then on heading 010°. Thence. . .

RUNWAYS 1L/R: From over JHAWK on MCI R-223 to HOOZE then on heading 060°. Thence. . .

RUNWAYS 9, 27: From over JHAWK on MCI R-223 to HOOZE. Thence. . .

LANDING KANSAS CITY DOWNTOWN/WHEELER FLD (MCK):
RUNWAYS 1, 4: From over JHAWK on MCI R-223 to HOOZE. Thence. . .
RUNWAYS 19, 22: From over JHAWK on MCI R-223 to NOAHS then on heading 010°. Thence. . .

LANDING ROSECRANS MEML (STJ) AND SHERMAN AAF (FLV):
From over JHAWK on MCI R-223 to NOAHS then on heading 010°. Thence. . .

ALL OTHER AIRPORTS: From over JHAWK on MCI R-223 to HOOZE. Thence. . .

. . . expect RADAR vectors to final approach course.

NOTE: Chart not to scale.

NC-3, 07 AUG 2025 to 04 SEP 2025

JHAWK EIGHT ARRIVAL

KANSAS CITY, MISSOURI

(JHAWK.JHAWK8) 16MAY24