

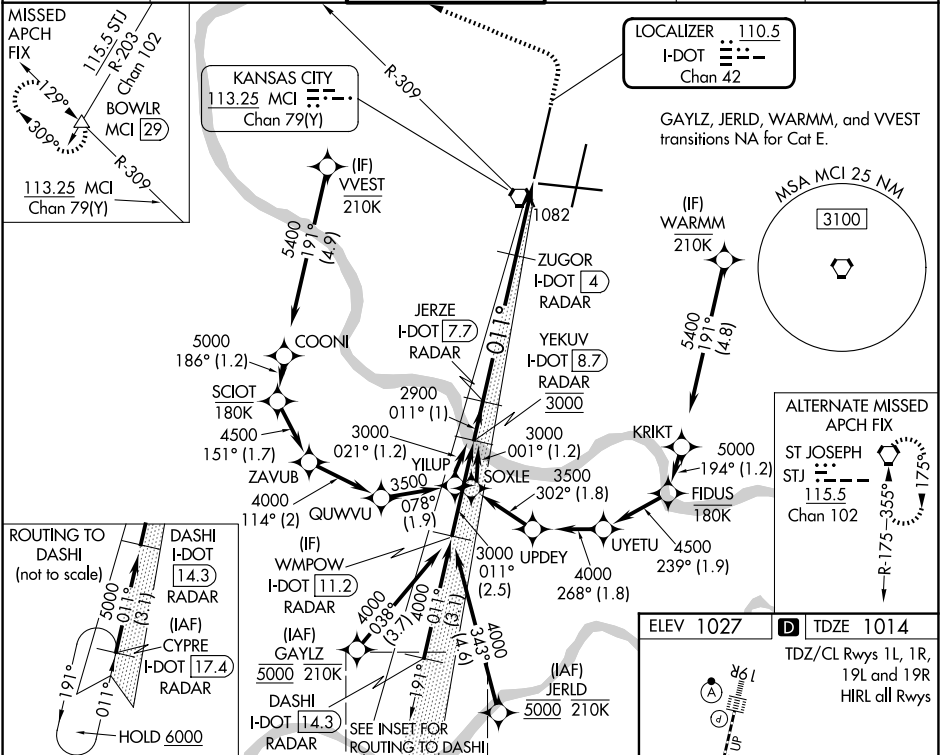
LOC/DME I-DOT	APP CRS	Rwy Ldg	10801
110.5	011°	TDZE	1014
Chan 42		Apt Elev	1027

ILS or LOC RWY 1L

KANSAS CITY INTL (MCI)

RNP APCH - GPS. From GAYLZ or JERLD or WARMW or VVEST.	MALSR	MISSED APPROACH: Climb to 2000 then climbing left turn to 4000 on heading 290° and MCI R-309 to BOWLW INT/MCI 29 DME and hold.
DME or RADAR required. RADAR required for procedure entry at CYPRE.		
For inop ALS, increase S-ILS 1L Cat E visibility to RVR 4000 and S-LOC 1L Cat E visibility to RVR 5000. Simultaneous approach authorized except from GAYLZ, JERLD, VVEST, and WARMW.		

D-ATIS	KANSAS CITY APP CON	INTERNATIONAL TOWER	GND CON	CLNC DEL	CPDLC
128.375	120.95 318.1	128.2 254.25	121.8	135.7	



	VGSI and ILS glidepath not coincident (VGSI Angle 3.00/TCH 78).				
	2000 4000 MCI BOWLW				
	↑ hdg 290° R-309				
	ZUGOR I-DOT 4 I-DOT 2.7 I-DOT 2				
	3000 011° 2900 1700				
	See planview for multiple IF locations.				
	-1 NM -3.7 NM -1.2 NM 0.8				
CATEGORY	A	B	C	D	E
S-ILS 1L	1214/18 200 (200-½)				
S-LOC 1L	1340/24	326 (400-½)	1340/26	326 (400-½)	
CIRCLING	1540-1	513 (600-1)	1540-1½ 513 (600-½)	1580-2	553 (600-2)

