

LOC/DME I-PVL <b>110.75</b> Chan <b>44</b> (Y)	APP CRS <b>011°</b>	Rwy Ldg TDZE <b>1017</b> Apt Elev <b>1027</b>
--	------------------------	---

ILS RWY 1R (CAT II & III)  
KANSAS CITY INTL (MCI)

RNP PAD - GPS. From BAUNR or COOKD or WUZBY or HELAN.

DME or RADAR required. RADAR required for procedure entry at SPICY.

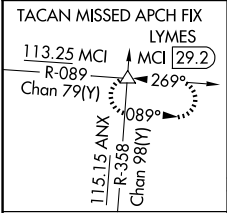
Simultaneous approach authorized except from BAUNR, COOKD, WUZBY, and HELAN. CAT II: RVR 1000 authorized with specific OPSPEC, MSPEC, or LOA approval and use of autoland or HUD to touchdown.

ALSF-2



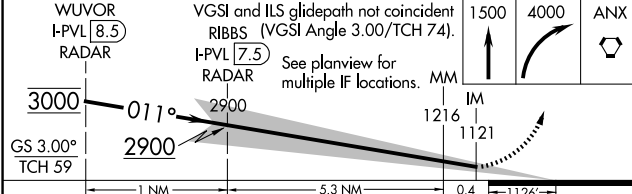
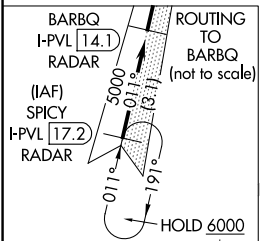
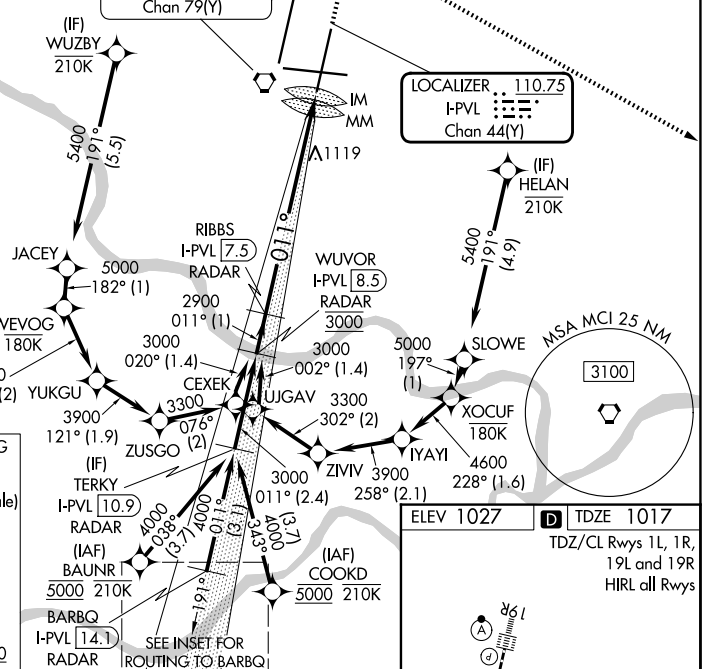
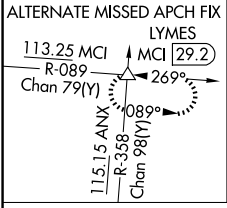
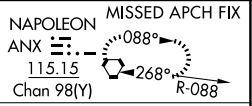
MISSED APPROACH: Climb to 1500 then climbing right turn to 4000 direct ANX VORTAC and hold. (TACAN aircraft) Climb to 1500 then climbing right turn to 4000 on heading 130° and MCI R-089 to LYMES INT/MCI 29.2 DME and hold.

D-ATIS <b>128.375</b>	KANSAS CITY APP CON <b>120.95 318.1</b>	INTERNATIONAL TOWER <b>128.2 254.25</b>	GND CON <b>121.8</b>	CLNC DEL <b>135.7</b>	CPDLC
--------------------------	--	--	-------------------------	--------------------------	-------

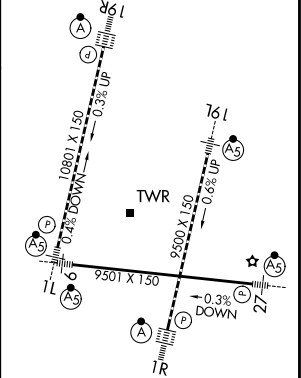


From BAUNR, COOKD, WUZBY, and HELAN transitions NA for Cat E.

KANSAS CITY  
113.25 MCI  
Chan 79(Y)



ELEV 1027	TDZE 1017
TDZ/CL Rwy 1L, 1R, 19L and 19R	
HIRL all Rwys	



CATEGORY	A	B	C	D	E
S-ILS 1R	CAT II RA 111/12 100 DA 1117				
S-ILS 1R	CAT III RVR 06				

CATEGORY II & III ILS - SPECIAL AIRCREW & AIRCRAFT CERTIFICATION REQUIRED