

25219

WAAS CH <b>50415</b> <b>W14A</b>	APP CRS <b>144°</b>	Rwy Ldg <b>6602</b> TDZE <b>1083</b> Apt Elev <b>1099</b>
--	------------------------	---

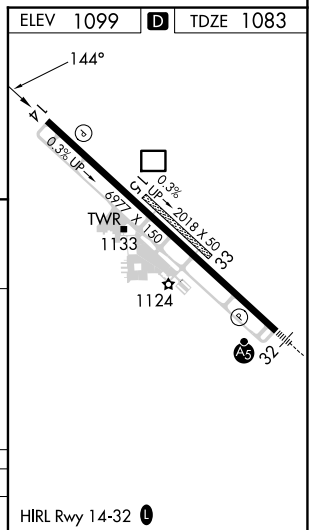
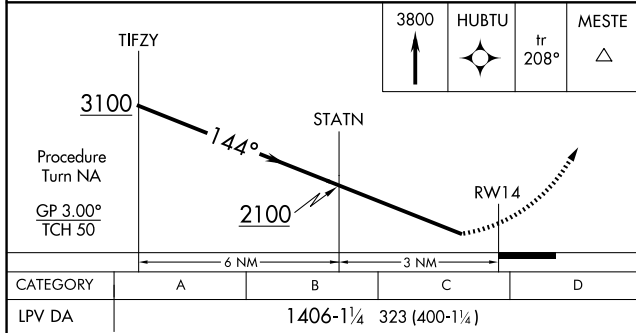
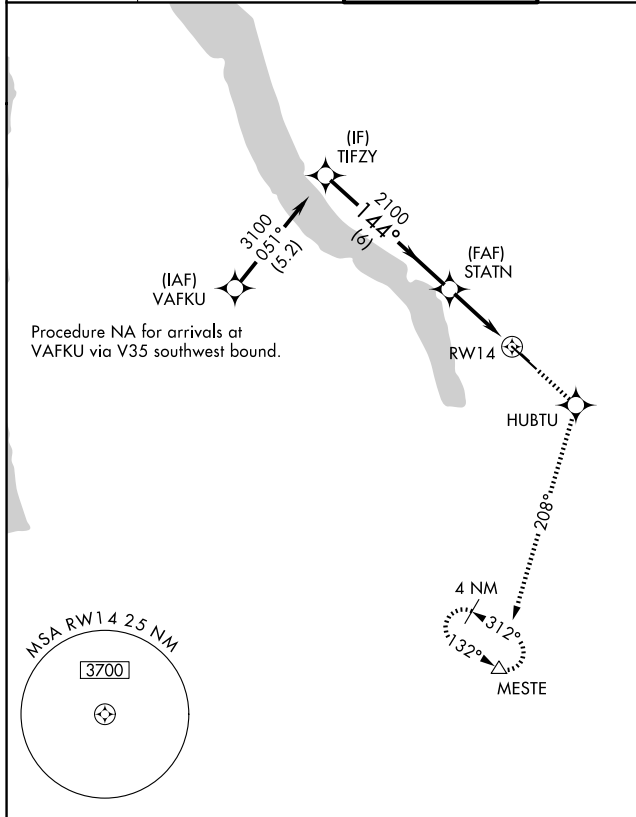
## RNAV (GPS) Z RWY 14

ITHACA TOMPKINS INTL (ITH)

**T** DME/DME RNP-0.3 NA. Visibility reduction by helicopters NA. When local  
**A** altimeter setting not received, use Elmira altimeter setting and increase DA  
 84 feet and LPV all Cats visibility ¼ mile.  
**☼** +18°C

**MISSED APPROACH:** Climb to 3800 direct HUBTU and via track 208° to MESTE and hold.

ATIS <b>125.175</b>	ELMIRA APP CON ★ <b>124.3 257.8</b>	ITHACA TOWER ★ <b>119.6 (CTAF) 0</b>	GND CON <b>121.8</b>	CLNC DEL <b>121.8</b>	UNICOM <b>122.95</b>
------------------------	--	---	-------------------------	--------------------------	-------------------------



ITHACA, NEW YORK  
Orig-A 29JUL10

42°29'N - 76°28'W

ITHACA TOMPKINS INTL (ITH)  
RNAV (GPS) Z RWY 14

NE-2, 07 AUG 2025 to 04 SEP 2025