



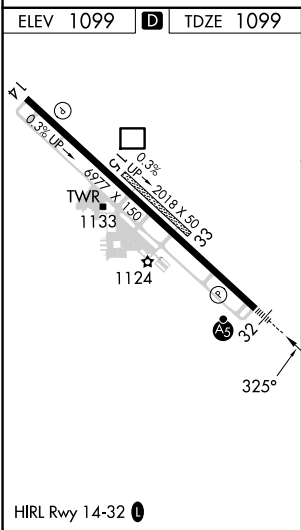
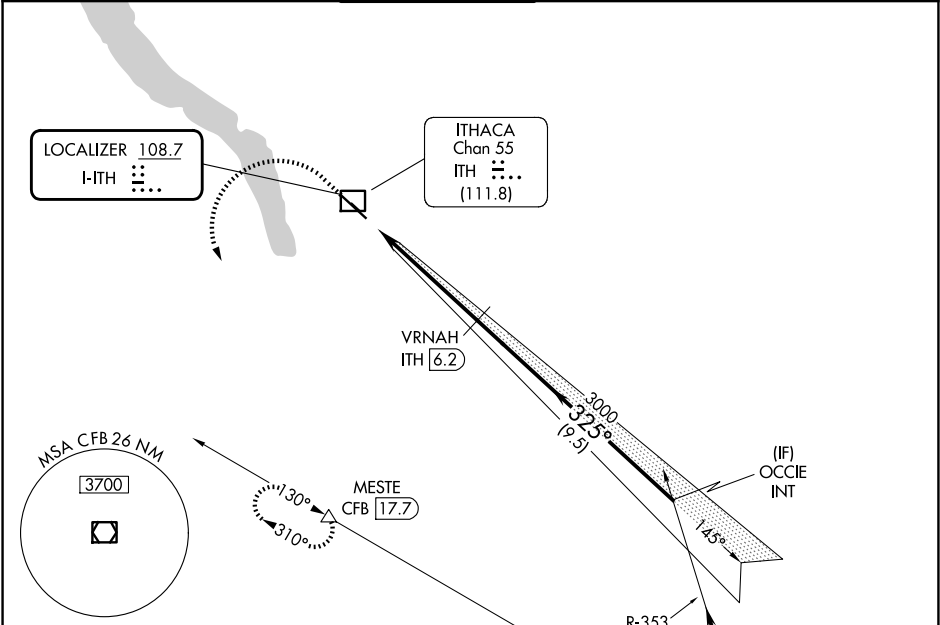


LOC I-ITH	APP CRS	Rwy Ldg	6602
108.7	325°	TDZE	1099
		Apt Elev	1099

ILS or LOC RWY 32

ITHACA TOMPKINS INTL (ITH)

DME required.			<div>MALSR</div> <div></div>	MISSED APPROACH: Climb to 2600 then climbing left turn to 4000 on heading 180° and CFB VOR/DME R-310 to MESTE/CFB VOR/DME 17.7 DME and hold.		
<div><div><div></div><div></div><div></div></div><div>Circling NA to Rwy's 15 and 33. DME from ITH DME. DME use requires simultaneous reception of I-ITH and ITH DME.</div><div>-18°C</div></div>						
ATIS	ELMIRA APP CON ★	ITHACA TOWER ★	GND CON	CLNC DEL	UNICOM	
125.175	124.3 257.8	119.6 (CTAF) 0	121.8	121.8	122.95	



IAF  
BINGHAMTON  
112.2 CFB  
Chan 59

R-310

3400  
335°  
(110)

Procedure NA for arrival on CFB  
VOR/DME airway radials 310 CW  
015 and V374 northwest bound.

2600 4000 MESTE

↑ hdg 180° CFB R-310 △

VRNAH ITH 6.2

OCCIE INT

3400

GS 3.20° TCH 54

ITH 0.8 ITH 3.6 ITH 6.2

2.9 NM 2.6 NM 9.5 NM

CATEGORY	A	B	C	D
S-ILS 32	1349/24 250 (300-½)			
S-LOC 32	2140/40 1041 (1100-¾)	2140/55 1041 (1100-1)	2140-2½ 1041 (1100-2½)	
CIRCLING	2140-1¼ 1041 (1100-1¼)	2140-1½ 1041 (1100-1½)	2140-3 1041 (1100-3)	2440-3 1341 (1400-3)

NE-2, 07 AUG 2025 to 04 SEP 2025

NE-2, 07 AUG 2025 to 04 SEP 2025