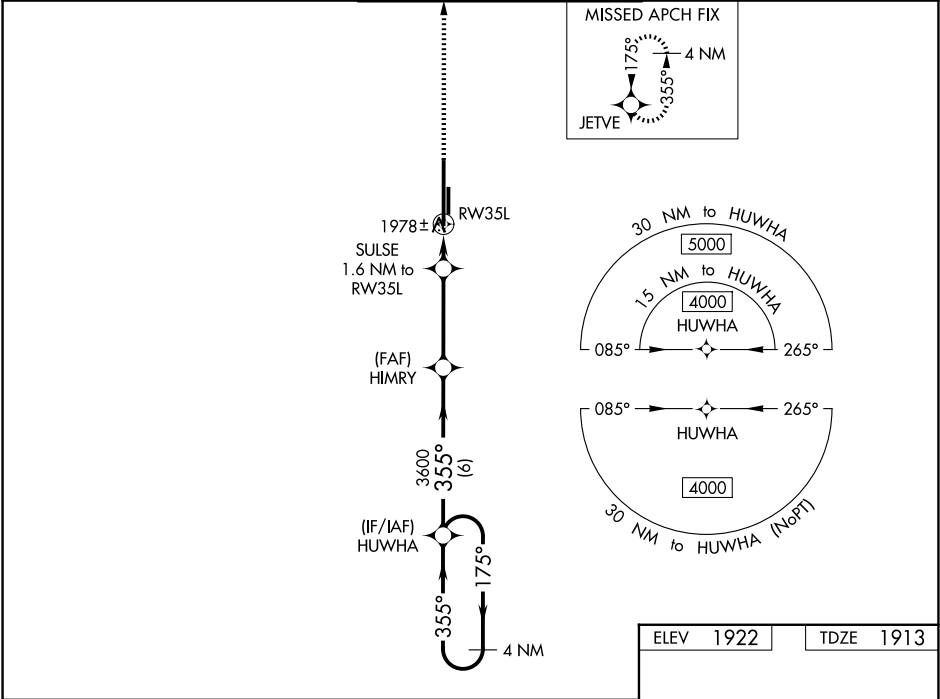


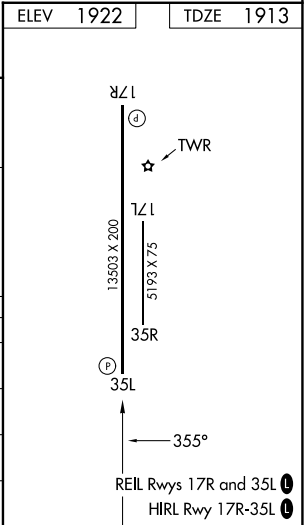
WAAS CH 40217 W35A	APP CRS 355°	Rwy Ldg TDZE 1913 Apt Elev 1922
--	------------------------	---

RNAV (GPS) RWY 35L
CLINTON/SHERMAN (CSM)

<p>T For uncompensated Baro-VNAV systems, LNAV/VNAV NA below -12°C (11°F) or above 54°C (130°F). Circling NA east of Rwy 17R-35L. DME/DME RNP-0.3 NA.</p> <p>A</p>			MISSED APPROACH: Climb to 4100 direct JETVE and hold.	
ASOS 118.45	FORT WORTH CENTER 128.4 269.37	CLINTON/SHERMAN TOWER★ 119.6 (CTAF) 256.9	GND CON 121.7 239.0	UNICOM 122.95



<div>4 NM Holding Pattern</div> <div>HUUWHA</div> <div>HIMRY</div> <div>SULSE 1.6 NM to RW35L</div> <div>4100</div> <div>JETVE</div>					<div>4000</div> <div>175°</div> <div>355°</div> <div>355°</div> <div>3600</div> <div>*2460</div> <div>*0.9 NM to RW35L</div> <div>RW35L</div> <div>*LNAV only.</div>						
<div>GP 3.00°</div> <div>TCH 50</div>					<div>6 NM</div> <div>3.5 NM</div> <div>0.7 NM</div> <div>0.9 NM</div>						
CATEGORY		A		B		C		D		E	
LPV DA		2113-¾ 200 (200-¾)									
LNAV/VNAV DA		2163-¾ 250 (300-¾)									
LNAV MDA		2240-1 327 (400-1)									
CIRCLING		2340-1 418 (500-1)		2380-1 458 (500-1)		2380-1½ 458 (500-1½)		2620-2¼ 698 (700-2¼)		2620-2½ 698 (700-2½)	



CLINTON/SHERMAN (CSM)
RNAV (GPS) RWY 35L

SC-1, 07 AUG 2025 to 04 SEP 2025

SC-1, 07 AUG 2025 to 04 SEP 2025