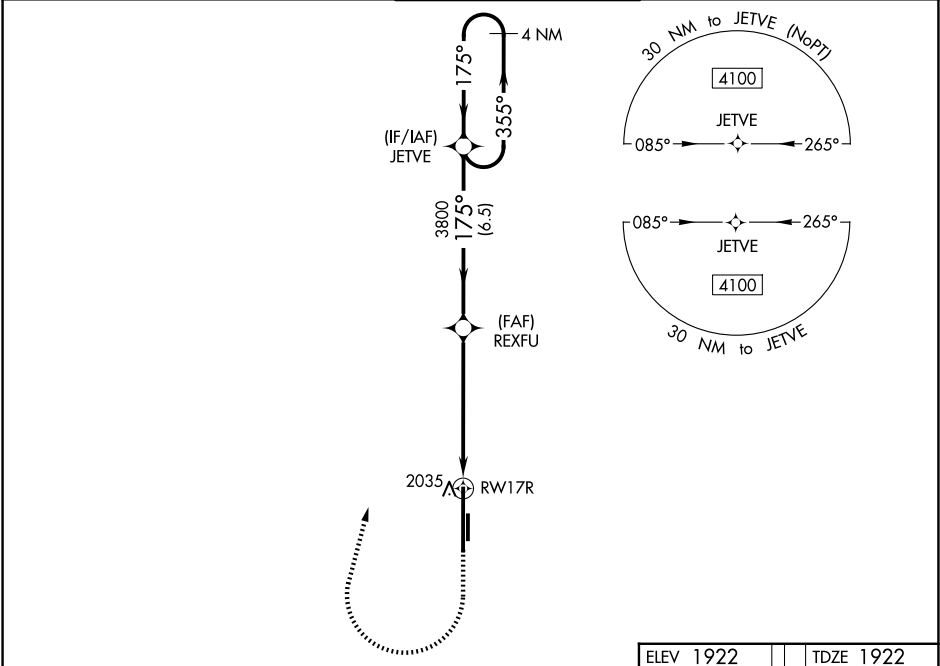


WAAS CH 86717 W17A	APP CRS 175°	Rwy Ldg 13503 TDZE 1922 Apt Elev 1922
--	------------------------	--

RNAV (GPS) RWY 17R

CLINTON/SHERMAN (CSM)

▼ For uncompensated Baro-VNAV systems, LNAV/VNAV NA below -12°C (11°F) ▲ or above 54°C (130°F). Circling NA east of Rwy 17R-35L. DME/DME RNP-0.3 NA.		MISSED APPROACH: Climb to 2500 then climbing right turn to 4100 direct JETVE and hold.		
ASOS 118.45	FORT WORTH CENTER 128.4 269.37	CLINTON/SHERMAN TOWER★ 119.6 (CTAF) 0 256.9	GND CON 121.7 239.0	UNICOM 122.95



2500

4100

JETVE

*LNAV only.

CATEGORY	A	B	C	D	E
LPV DA	2122-¾ 200 (200-¾)				
LNAV/VNAV DA	2234-1 312 (400-1)				
LNAV MDA	2300-1 378 (400-1)				
CIRCLING	2340-1 418 (500-1)	2380-1 458 (500-1)	2380-1½ 458 (500-1½)	2620-2¼ 698 (700-2¼)	2620-2½ 698 (700-2½)

4 NM Holding Pattern

JETVE

355°

175°

4100

GP 3.00°
TCH 54

175°

175°

3800

3800

1 NM

4.7 NM

6.5 NM

175°

175°

3800

3800

1 NM

4.7 NM

6.5 NM

175°

175°

3800

3800

1 NM

4.7 NM

6.5 NM

175°

175°

3800

3800

1 NM

4.7 NM

6.5 NM

175°

175°

3800

3800

1 NM

4.7 NM

6.5 NM

175°

175°

3800

3800

1 NM

4.7 NM

6.5 NM

175°

175°

3800

3800

1 NM

4.7 NM

6.5 NM

175°

175°

3800

3800

1 NM

4.7 NM

6.5 NM

175°

175°

3800

3800

1 NM

4.7 NM

6.5 NM

175°

175°

3800

3800

1 NM

4.7 NM

6.5 NM

175°

175°

3800

3800

1 NM

4.7 NM

6.5 NM

175°

175°

3800

3800

1 NM

4.7 NM

6.5 NM

175°

175°

3800

3800

1 NM

4.7 NM

6.5 NM

175°

175°

3800

3800

1 NM

4.7 NM

6.5 NM

175°

175°

3800

3800

1 NM

4.7 NM

6.5 NM

175°

175°

3800

3800

1 NM

4.7 NM

6.5 NM

175°

175°

3800

3800

1 NM

4.7 NM

6.5 NM

175°

175°

3800

3800

1 NM

4.7 NM

6.5 NM

175°

175°

3800

3800

1 NM

4.7 NM

6.5 NM

175°

175°

3800

3800

1 NM

4.7 NM

6.5 NM

175°

175°

3800

3800

1 NM

4.7 NM

6.5 NM

175°

175°

3800

3800

1 NM

4.7 NM

6.5 NM

175°

175°

3800

3800

1 NM

4.7 NM

6.5 NM

175°

175°

3800

3800

1 NM

4.7 NM

6.5 NM

175°

175°

3800

3800

1 NM

4.7 NM

6.5 NM

175°

175°

3800

3800

1 NM

4.7 NM

6.5 NM

175°

175°

3800

3800

1 NM

4.7 NM

6.5 NM

175°

175°

3800

3800

1 NM

4.7 NM

6.5 NM

175°

175°

3800

3800

1 NM

4.7 NM

6.5 NM

175°

175°

3800

3800

1 NM

4.7 NM

6.5 NM

175°

175°

3800

3800

1 NM

4.7 NM

6.5 NM

175°

175°

3800

3800

1 NM

4.7 NM

6.5 NM

175°

175°

3800

3800

1 NM

4.7 NM

6.5 NM

175°

175°

3800

3800

1 NM

4.7 NM

6.5 NM

175°

175°

3800

3800

1 NM

4.7 NM

6.5 NM

175°

175°

3800

3800

1 NM

4.7 NM

6.5 NM

175°

175°

3800

3800

1 NM

4.7 NM

6.5 NM

175°

175°

3800

3800

1 NM

4.7 NM

6.5 NM

175°

175°

3800

3800

1 NM

4.7 NM

6.5 NM

175°

175°

3800

3800

1 NM

4.7 NM

6.5 NM

175°

175°

3800

3800

1 NM

4.7 NM

6.5 NM

175°

175°

3800

3800

1 NM

4.7 NM

6.5 NM

175°

175°

3800

3800

1 NM

4.7 NM

6.5 NM

175°

175°

3800

3800

1 NM

4.7 NM

6.5 NM

175°

175°

3800

3800

1 NM

4.7 NM

6.5 NM

175°

175°

3800

3800

1 NM

4.7 NM

6.5 NM

175°

175°

3800

3800

1 NM

4.7 NM

6.5 NM

175°

175°

3800

3800

1 NM

4.7 NM

6.5 NM

175°

175°

3800

3800

1 NM

4.7 NM

6.5 NM

175°

175°

3800

3800

1 NM

4.7 NM

6.5 NM

175°

175°

3800

3800

1 NM

4.7 NM

6.5 NM

175°

175°

3800

3800

1 NM

4.7 NM

6.5 NM

175°

175°

3800

3800

1 NM

4.7 NM

6.5 NM

175°

175°

3800

3800

1 NM

4.7 NM

6.5 NM

175°

175°

3800

3800

1 NM

4.7 NM

6.5 NM

175°

175°

3800

3800

1 NM

4.7 NM

6.5 NM

175°

175°

3800

3800

1 NM

4.7 NM

6.5 NM

175°

175°

3800

3800

1 NM

4.7 NM

6.5 NM

175°

175°

3800

3800

1 NM

4.7 NM

6.5 NM

175°

175°

3800

3800

1 NM

4.7 NM

6.5 NM

175°

175°

3800

3800

1 NM

4.7 NM

6.5 NM

175°

175°

3800

3800

1 NM

4.7 NM

6.5 NM

175°

175°

3800

3800

1 NM

4.7 NM

6.5 NM

175°

175°

3800

3800

1 NM

4.7 NM

6.5 NM

175°

175°

3800

3800

1 NM

4.7 NM

6.5 NM

175°

175°

3800

3800

1 NM

4.7 NM

6.5 NM

175°

175°

3800

3800

1 NM

4.7 NM

6.5 NM

175°

175°

3800

3800

1 NM

4.7 NM

6.5 NM

175°

175°

3800

3800

1 NM

4.7 NM

6.5 NM

175°

175°

3800

3800

1 NM

4.7 NM

6.5 NM

175°

175°

3800

3800

1 NM

4.7 NM

6.5 NM

175°

175°

3800

3800

1 NM

4.7 NM

6.5 NM

175°

175°

3800

3800

1 NM

4.7 NM

6.5 NM

175°

175°

3800

3800

1 NM

4.7 NM

6.5 NM

175°

175°

3800

3800

1 NM

4.7 NM

6.5 NM

175°

175°

3800

3800

1 NM

4.7 NM

6.5 NM

175°

175°

3800

3800

1 NM

4.7 NM

6.5 NM

175°

175°

3800

3800

1 NM

4.7 NM

6.5 NM

175°

175°

3800

3800

1 NM

4.7 NM

6.5 NM

175°

175°

3800

3800

1 NM

4.7 NM

6.5 NM

175°

175°

3800

3800

1 NM

4.7 NM

6.5 NM

175°

175°

3800

3800

1 NM

4.7 NM

6.5 NM

175°

175°

3800

3800

1 NM

4.7 NM

6.5 NM

175°

175°

3800

3800

1 NM

4.7 NM

6.5 NM

175°

175°

3800

3800

1 NM

4.7 NM

6.5 NM

175°

175°

3800

3800

1 NM

4.7 NM

6.5 NM

175°

175°

3800

3800

1 NM

4.7 NM

6.5 NM

175°

175°

3800

3800

1 NM

4.7 NM

6.5 NM

175°

175°

3800

3800

1 NM

4.7 NM

6.5 NM

175°

175°

3800

3800

1 NM

4.7 NM

6.5 NM

175°

175°

3800

3800

1 NM

4.7 NM

6.5 NM

175°

175°

3800

3800

1 NM

4.7 NM

6.5 NM

175°

175°

3800

3800

1 NM

4.7 NM

6.5 NM

175°

175°

3800

3800

1 NM

4.7 NM

6.5 NM

175°

175°

3800

3800

1 NM

4.7 NM

6.5 NM

175°

175°

3800

3800

1 NM

4.7 NM

6.5 NM

175°

175°

3800

3800

1 NM

4.7 NM

6.5 NM

175°

175°

3800

3800

1 NM

4.7 NM

6.5 NM

175°

175°

3800

3800

1 NM

4.7 NM

6.5 NM

175°

175°

3800

3800

1 NM

4.7 NM

6.5 NM

175°

175°

3800

3800

1 NM

4.7 NM

6.5 NM

175°

175°

3800

3800

1 NM

4.7 NM

6.5 NM

175°

175°

3800

3800

1 NM

4.7 NM

6.5 NM

175°

175°

3800

3800

1 NM

4.7 NM

6.5 NM

175°

175°

3800

3800

1 NM

4.7 NM

6.5 NM

175°

175°

3800

3800

1 NM

4.7 NM

6.5 NM

175°

175°

3800

3800

1 NM

4.7 NM

6.5 NM

175°

175°

3800

3800

1 NM

4.7 NM

6.5 NM

175°

175