

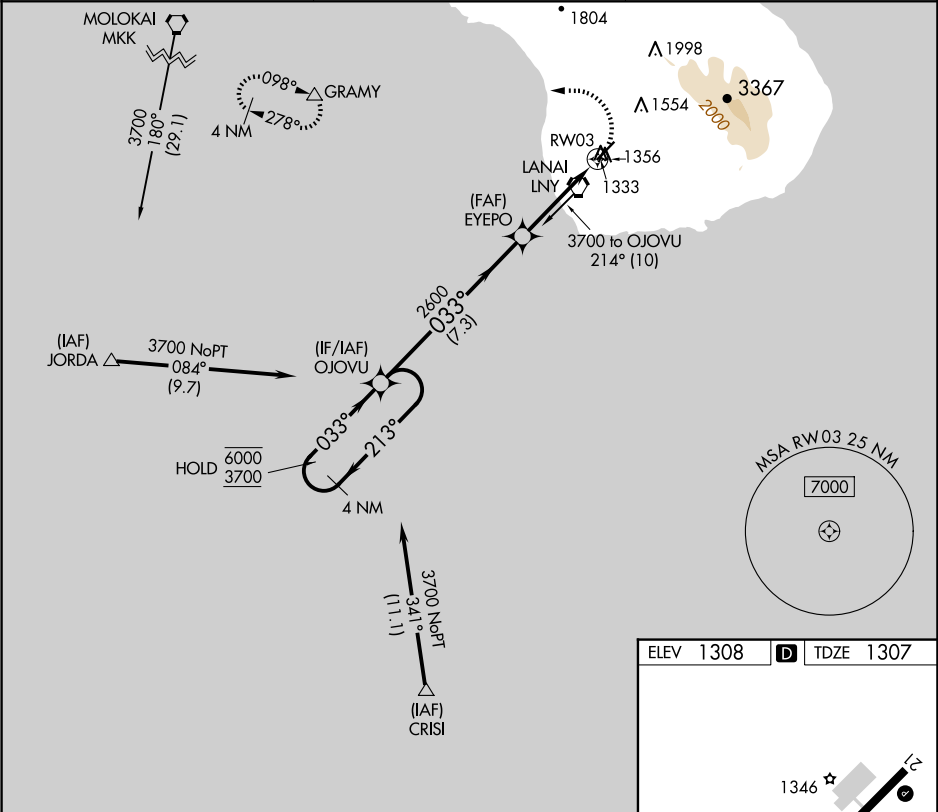
APP CRS	Rwy Idg	5000
033°	TDZE	1307
	Apt Elev	1308

RNAV (GPS) RWY 3

LANAI (LNY)(PHNY)

RNP APCH.	MISSED APPROACH: Climbing left turn to 3300 direct GRAMY and hold.
▼ ▲ Circling Rwy 21 NA at night. When local altimeter setting not received, procedure NA, except for operators with approved weather reporting service. Circling NA for Cat C southeast of Rwy 3-21.	

AWOS-3P 118.375	HCF CENTER 119.3 307.1	CTAF 122.9 0
--------------------	---------------------------	-----------------



<div>4 NM Holding Pattern</div> <div>6000 ← 213°</div> <div>3700 → 033°</div>				<div>VGSI and descent angles not coincident (VGSI Angle 3.00/TCH 49).</div> <div>OJOVU</div>				<div>3300</div> <div>GRAMY</div> <div>△</div>	
				<div>EYEPO</div> <div>033°</div> <div>2600</div>		<div>1.2 NM to RW03</div> <div>3.03° TCH 52</div> <div>RW03</div>			
				<div>7.3 NM</div>		<div>2.7 NM</div>			
				<div>1.2 NM</div>					
CATEGORY	A		B		C		D		
LNAV MDA	1720-1		413 (500-1)		1720-1¼		413 (500-1¼)		
CIRCLING	1840-1 532 (600-1)		1900-1 592 (600-1)		2140-2½ 832 (900-2½)		NA		

ELEV 1308	D	TDZE 1307
MIRL Rwy 3-21 0		