
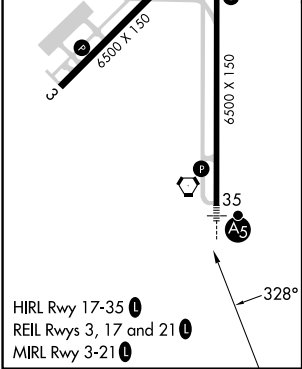
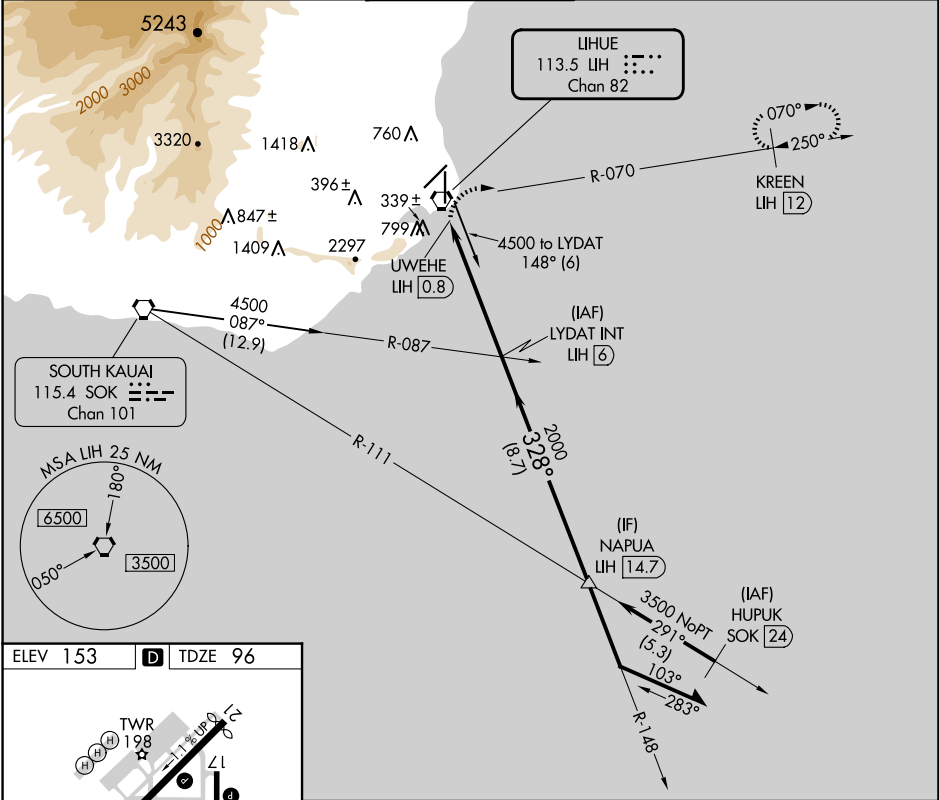


VORTAC LIH	APP CRS	Rwy Idg	6500
113.5	328°	TDZE	96
Chan 82		Apt Elev	153

VOR or TACAN RWY 35
LIHUE (LIH)(PHLI)

V Circling NA at night. Inoperative table does not apply. Circling NA west of Rwy 17-35. DME or RADAR required.		MALSR 	MISSED APPROACH: Climbing right turn to 3000 via heading 100° and LIH VORTAC R-070 to KREEN/12 DME/RADAR and hold.	
ATIS 127.2	HCF CENTER 126.5 269.4	LIHUE TOWER★ 118.9(CTAF) 0 263.1	GND CON 121.9	CLNC DEL 126.5 269.4 (When twr closed)



<p>3000</p> <p>LIH R-070</p> <p>hdg 100°</p>		<p>KREEN</p> <p>LIH 12</p>		<p>LYDAT INT</p> <p>LIH 6</p>		<p>Remain within 1.5 NM</p>	
<p>LIH 1.6</p>		<p>LIH 0.8</p>		<p>3500</p>		<p>2000</p>	
<p>UWEHE</p> <p>LIH 0.8</p>		<p>2.97°</p> <p>TCH 55</p>		<p>4.5 NM</p>		<p>0.7</p>	
CATEGORY	A	B	C	D	E		
S-35	600-1	504 (500-1)	600-1½	504 (500-1½)	600-1¾	504 (500-1¾)	
CIRCLING	600-1	620-1	620-1½	720-2	567 (600-2)		
	447 (500-1)	467 (500-1)	467 (500-1½)				

PAC, 07 AUG 2025 to 02 OCT 2025

PAC, 07 AUG 2025 to 02 OCT 2025