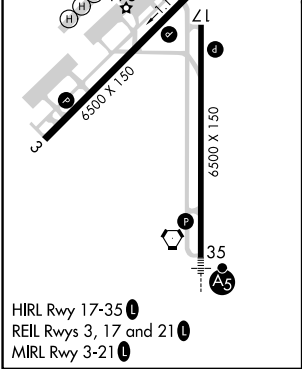
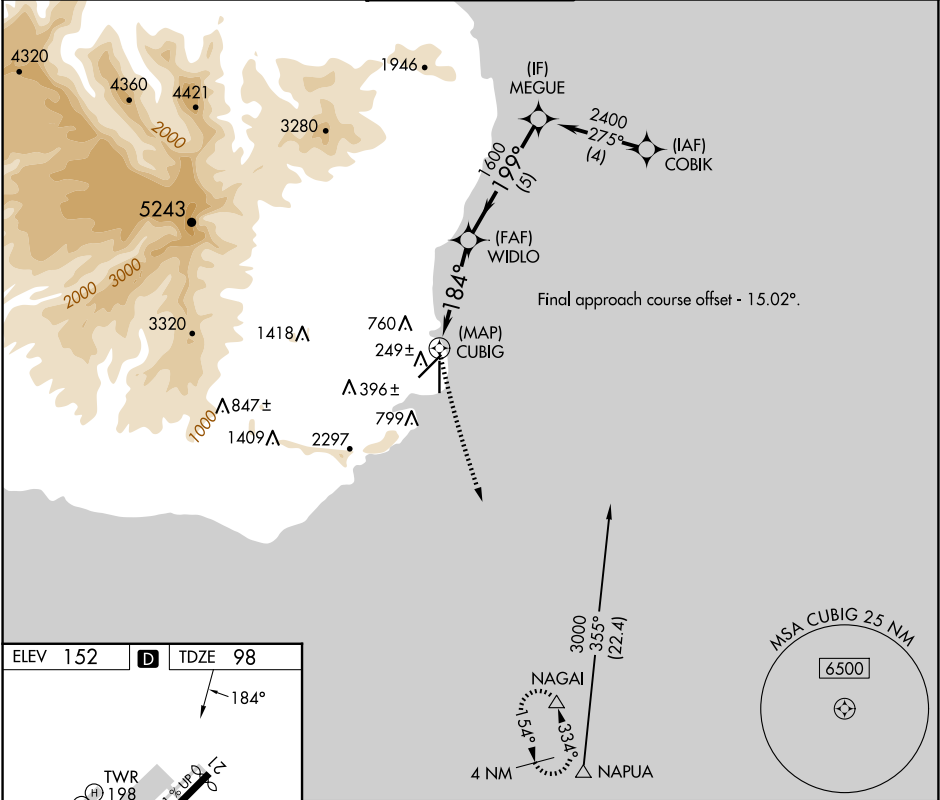


APP CRS	Rwy Idg	6500
184°	TDZE	98
	Apt Elev	152

RNAV (GPS) RWY 17

LIHUE (LIH)(PHLI)

RNP APCH-GPS.		MISSED APPROACH: Climbing left turn to 3000 direct NAGAI and hold.		
Circling NA at night. Circling NA west of Rwy 17-35.				
ATIS 127.2	HCF CENTER 126.5 269.4	LIHUE TOWER ★ 118.9(CTAF) 0 263.1	GND CON 121.9	CLNC DEL 126.5 269.4 (When twr closed)



3000 NAGAI		MEGUE	
CUBIG		WIDLO	
2 NM to CUBIG		2400	
3.05° TCH 55		1600	
0.5		5 NM	
CATEGORY	A	B	C
LNAV MDA	940-1 842 (800-1)	940-1¼ 842 (800-1¼)	940-2½ 842 (800-2½)
CIRCLING	940-1 788 (800-1)	940-1¼ 788 (800-1¼)	940-2½ 788 (800-2½)

PAC, 07 AUG 2025 to 02 OCT 2025

PAC, 07 AUG 2025 to 02 OCT 2025