

WAAS CH <b>86616</b> <b>W19A</b>	APP CRS <b>193°</b>	Rwy Ldg TDZE Apt Elev	<b>9072</b> <b>1205</b> <b>1205</b>
--	------------------------	-----------------------------	---

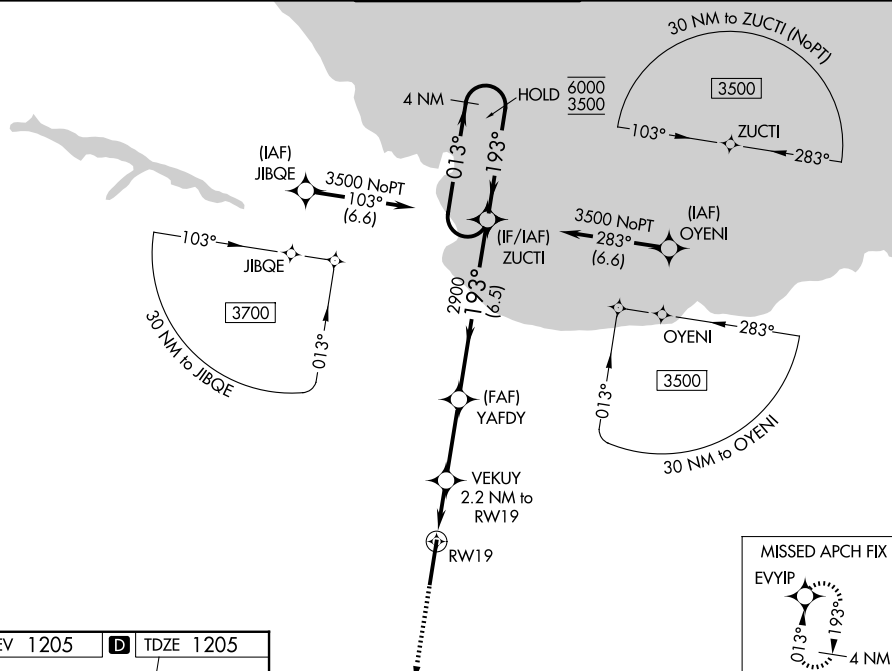
RNAV (GPS) RWY 19  
MARQUETTE/SAWYER RGNL (SAW)

RNP APCH - GPS.

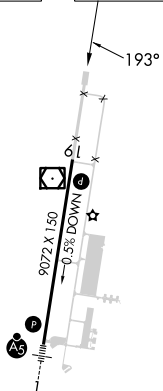
**T** For uncompensated Baro-VNAV systems, LNAV/VNAV NA below -17°C or above 54°C.

**MISSED APPROACH:** Climb to 3500 direct EVYIP and hold.

AWOS-3PT <b>118.375</b>	MINNEAPOLIS CENTER <b>119.1 290.2</b>	SAWYER TOWER ★ <b>119.975 (CTAF) 0</b>	GND CON <b>121.65</b>	UNICOM <b>122.7</b>
----------------------------	--	---	--------------------------	------------------------



ELEV 1205	<b>D</b>	TDZE 1205
-----------	----------	-----------



HIRL Rwy 1-19 **L**  
REIL Rwy 19 **L**

MARQUETTE, MICHIGAN

Amdt 2A 10JUL25

3500  
↑  
EVIYP

VGSI and RNAV glidepath not coincident  
(VGSI Angle 3.00/TCH 53).

4 NM Holding Pattern

ZUCTI

VEKUY  
2.2 NM to RW19

YAFDY  
2900

RW19

1.6 NM to RW19

1960

2900

193°

013° → 6000  
← 193° 3500

GP 3.00°  
TCH 60

CATEGORY	A	B	C	D
LPV DA	1405- $\frac{3}{4}$ 200 (200- $\frac{3}{4}$ )			
RNAV/ VNAV DA	1522- $\frac{7}{8}$ 317 (400- $\frac{7}{8}$ )			
RNAV MDA	1620-1 415 (500-1)		1620-1 $\frac{1}{8}$ 415 (500-1 $\frac{1}{8}$ )	
CIRCLING	1680-1 475 (500-1)		1820-1 $\frac{3}{4}$ 615 (700-1 $\frac{3}{4}$ )	1820-2 615 (700-2)

MARQUETTE/SAWYER RGNL (SAW)  
RNAV (GPS) RWY 19

46°21'N-87°24'W